

RESNET

Office of Housing and Residence Life



How to Get Connected

1. Click on **System Preferences**



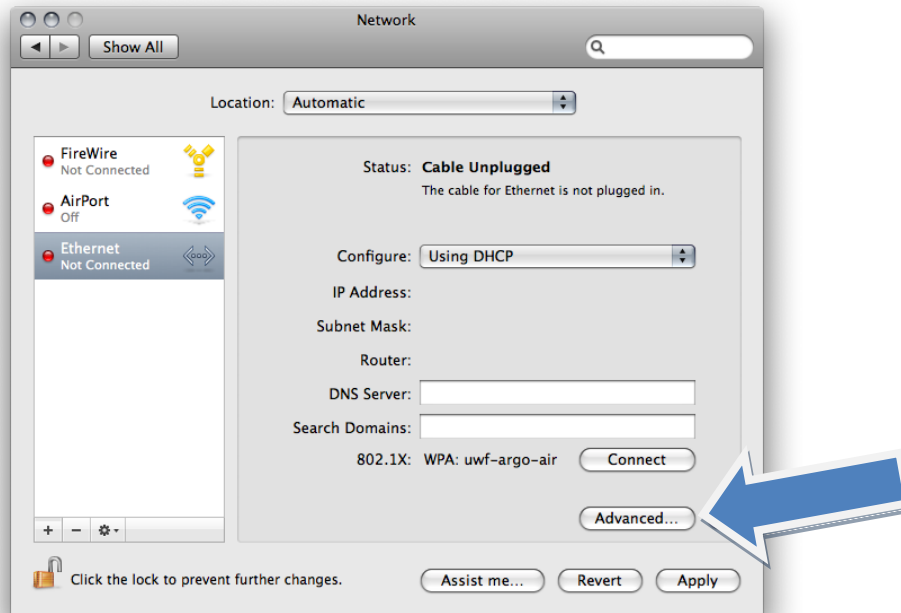
2. Click on **Network**



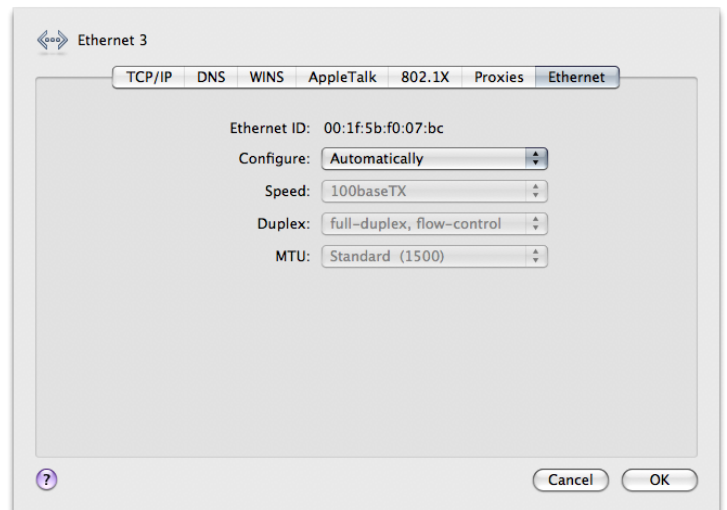
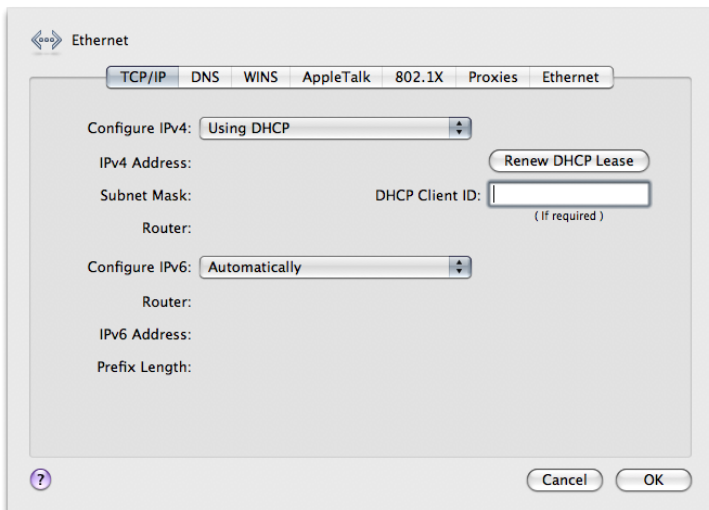
*Note: The recommended Ethernet cable is any Category 5e Patch Cable. These can be purchased at most major retailers and at the UWF bookstore in the University Commons.

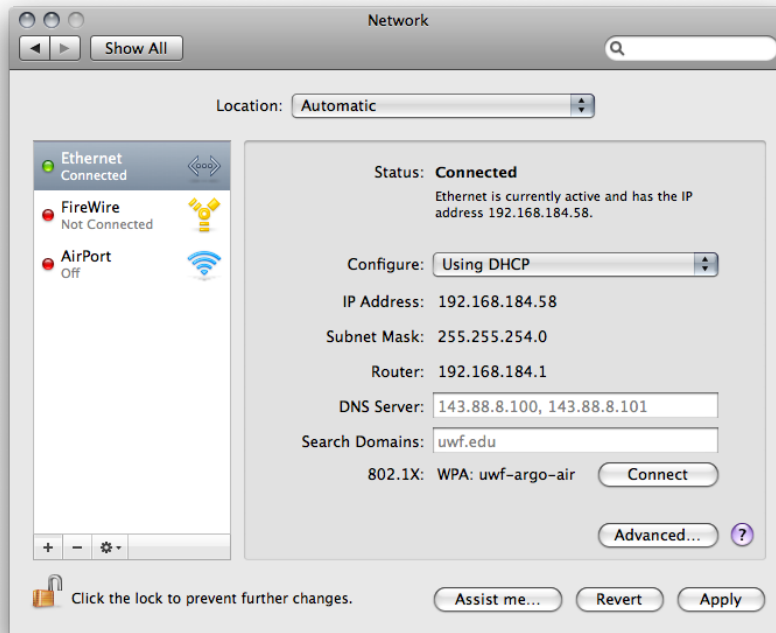
A length of 5 ft. should be sufficient for most uses.

- When this menu comes up it will look similar to the one below. Select the **Ethernet** connection in the left menu. Click **Advanced**



- In the new menu under the **TCP/IP** tab choose the option **Using DHCP** next to **Configure IPv4**. Then click the **Ethernet** tab and next to **Configure** select **Automatically**.





6. When you click **Apply** it should automatically detect the network and connect. The “bulb” next to **Ethernet** should be green and it should say “**Connected**”.



8. If you are still having issues please contact the ITS HelpDesk at:
(850) 474-2075 or uwf.edu/helpdesk