



UNIVERSITY *of* WEST FLORIDA

SEVERE WEATHER GUIDE



Department of Housing and
Residence Life

www.uwf.edu/housing



STORM WATCH

Weather conditions are conducive for the development of severe weather

STORM WARNING

Severe weather is expected to occur or is actively occurring

HURRICANE SEASON

Begins: June 1
Ends: November 30

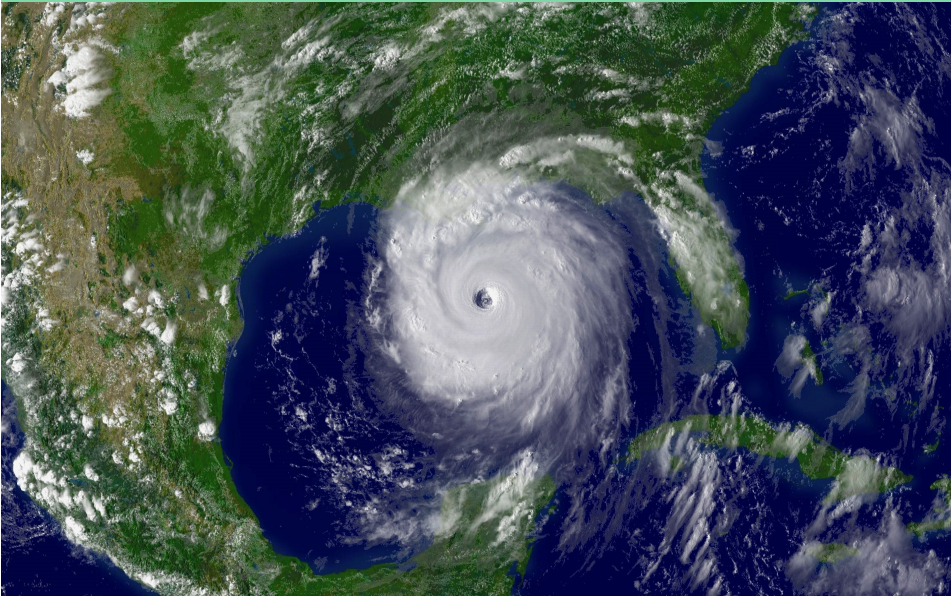
It is important all residents in University Housing stay informed about changing weather conditions.

In the event of a hurricane/severe weather, the University may close, and all on-campus resident students and guests (including camp and conference attendees) may need to evacuate University Housing. This pamphlet serves as an aid in maintaining personal safety of our guests and residents.

All residents are expected to have an evacuation plan and leave campus if able to do so.

SEVERE WEATHER INFORMATION OUTLETS

- **University Radio Station**
WUWF 88.1 FM and www.wuwf.org
- **UWF University Website**
www.uwf.edu
- **UWF Housing Website**
www.uwf.edu/housing
- **Pensacola News Journal**
www.pnj.com
- **WEAR Local TV & Website**
www.weartv.com



RESIDENT EXPECTATIONS

TROPICAL STORM ALERT

- Residents need to safeguard against these conditions to ensure personal safety, and the safety of belongings.

HURRICANE WATCH

- Resident students should begin preliminary preparations to protect personal safety, well-being and property.
- If there is not an evacuation and some facilities remain open, flyers will be posted at the Hall Offices and throughout the residential hall. Please check the area office for updates.

HURRICANE WARNING

- UWF may require evacuation of the campus, including University Housing.
- Flyers will be posted, announcements will be made and community meetings will be held in order to inform residents and camp/conference attendees.
- Residents should notify the Resident Assistant (RA) or Hall Director (HD) about their evacuation location when leaving the residence hall.

HOW TO PREPARE FOR AN EVACUATION

- Pull all furniture away from windows.
- All powered devices, floor coverings, and personal items should be unplugged and removed from the floor and placed in closets or drawers.
- Completely empty your refrigerator, unplug it and discard all perishable food items. Leave the refrigerator door open. Place all non-perishable food items in cupboards.
- Place all loose objects in drawers or closets. Do not leave items on shelves, dresser tops, or near windows.
- Close and lock all windows. Raise any mini blinds in the room to the open position. Completely open any vertical blinds. Curtains should be left open. Do not put tape on window glass.
- If you have a vehicle, fill the gas tank several days in advance. If not using your vehicle to evacuate, park it in an appropriate parking area with the emergency brake set. All windows should be closed and the vehicle locked. Vehicles parked near buildings and not in an approved parking area (i.e. motorcycles in bicycle racks, cars in loading zones) may be removed or towed at owner's expense.
- Bring bicycles in from the outside and store in a bedroom.
- Do NOT store motorcycles, mopeds, or any other vehicle with combustible fuel in or near the residence halls/complex. These must be stored at an alternate location.
- Plan to take all necessary medications, chargers, valuable items, and other personal items with you. You will not be able to reenter the complex.
- CLOSE AND LOCK ALL DOORS WHEN LEAVING YOUR ROOM/SUITE/APARTMENT.

THE HURRICANE SHELTER

A shelter is not intended to serve as a residential facility. It will most likely be crowded, offer little to no privacy, and minimal comforts will not be provided (cots, showers, etc. will not be available). Services and utilities, including electricity and technology, may be limited.

If the University closes and the campus evacuates, a shelter will be available to current on-campus residents only. Do not report to the shelter until it officially opens and is ready for service. The University and local media will announce shelter openings.

SHELTER/GO-BAG CHECKLIST

Pack lightly. Each individual will be responsible for carrying personal items. Security of items brought to the shelter is each individual's responsibility. You will not be permitted to re-enter your hall/complex after you relocate to the shelter.

- Bedding, including pillows and blankets
- Personal prescription medications, toiletries and extra set of clothing
- Flashlight with batteries or glow sticks
- Personal first aid kit
- Identification (Nautilus Card, driver's license, passport, etc.)
- Cash and/or debit card
- Valuable documents
- Drinking water and 24-hour supply of non-perishable food
- Books, games, laptop, cell phone and associated chargers



Housing and
Residence Life
UNIVERSITY of WEST FLORIDA

11000 University Parkway
Pensacola, FL 32514
(850) 474-2463
housing@uwf.edu