

FACILITIES PLANNING & CONSTRUCTION
Dr. James Barnett
Associate Vice President

Pat Cravatt
Office Administrator

Tricia Pursell
Business Manager

Les Wicker
Fiscal Specialist

**Emerald Coast
Planning**

**Major Capital &
Infrastructure Planning**

**Architectural &
Engineering Services**

**Maritime Park
Planning**

**West Campus
Planning**

Russ Seagren
Director

Karon Pursell
Computer Drafting Manager

Jackie Butler
Office Administrator

Dan Parker
Sr. Engineering
Technician

Robin Anderson
Space Manager

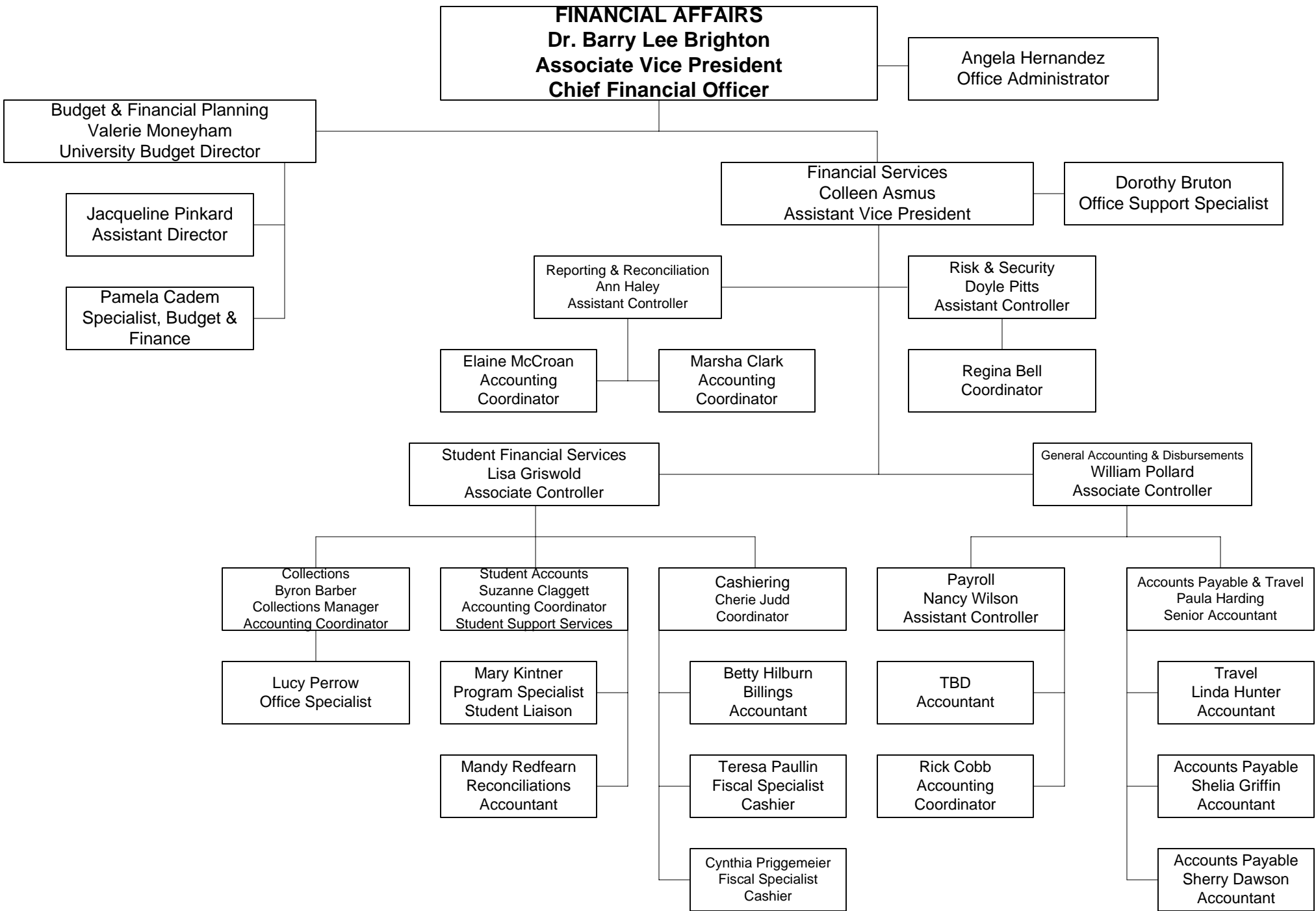
AutoCAD Technician
(OPS) Student

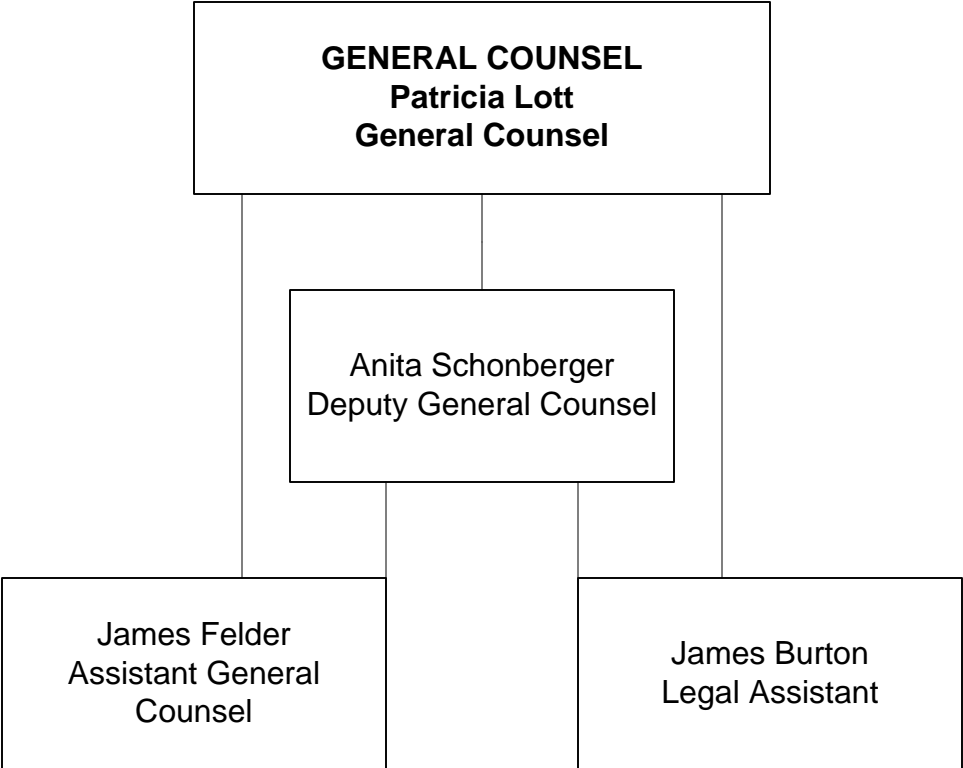
Perry Bankester
Project Manager

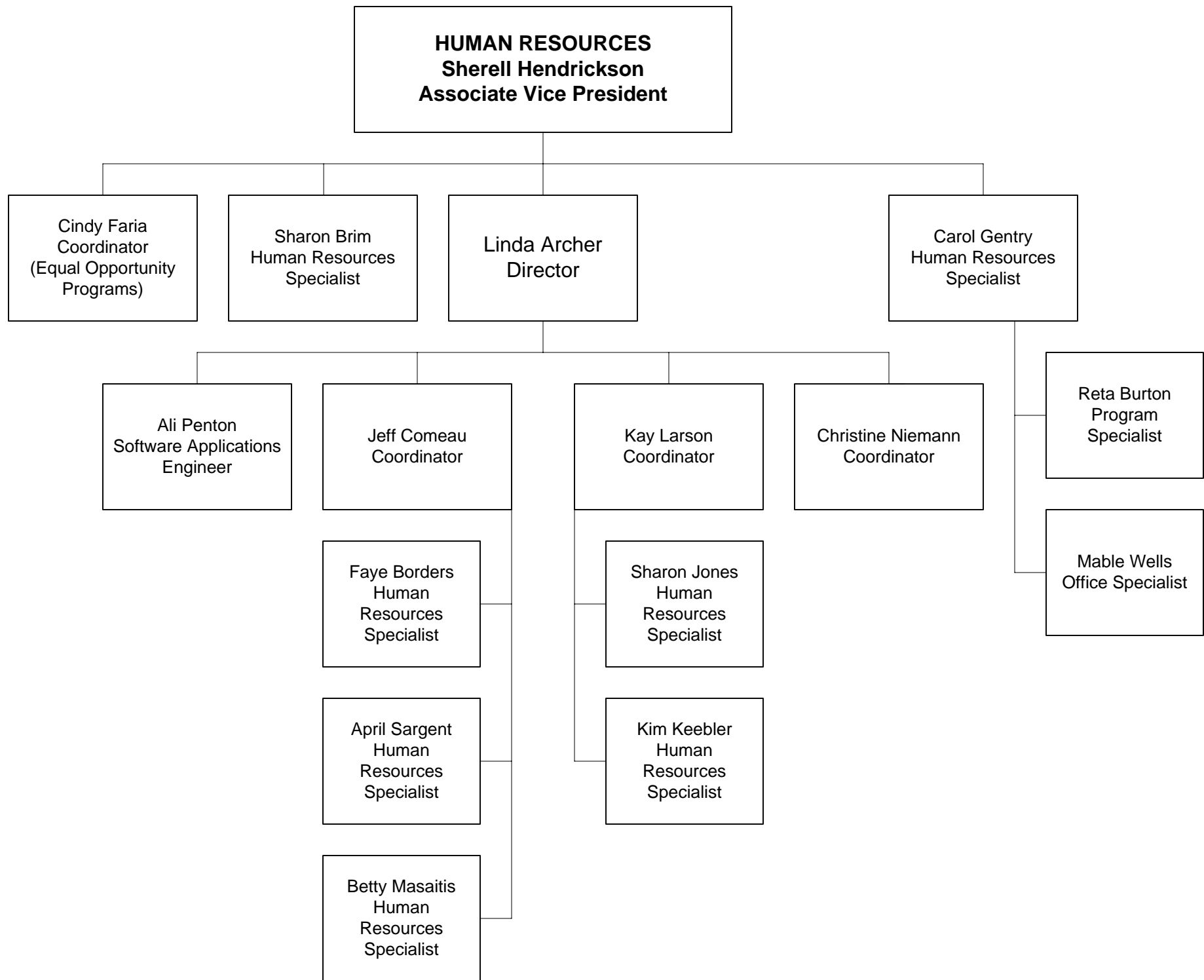
Jessie Mayo
Project Manager

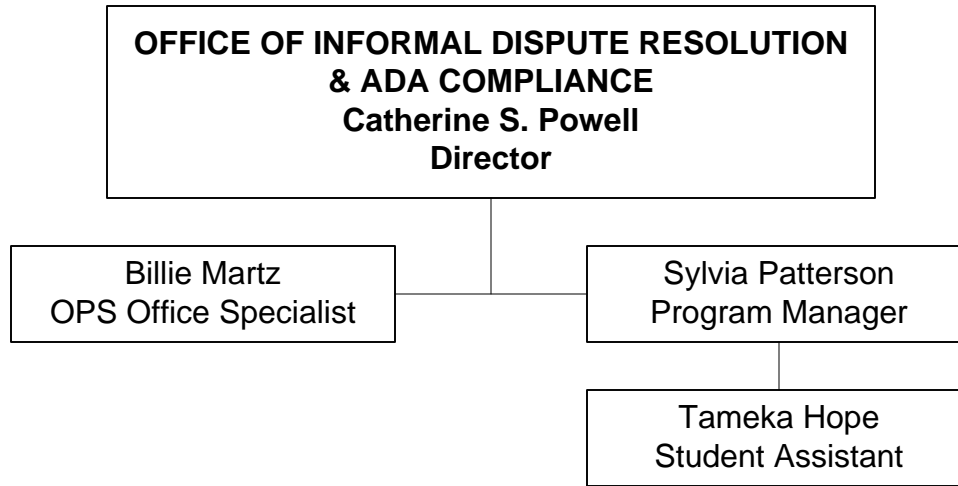
Terry Perry
Project Manager

Earl Smith
Project Manager





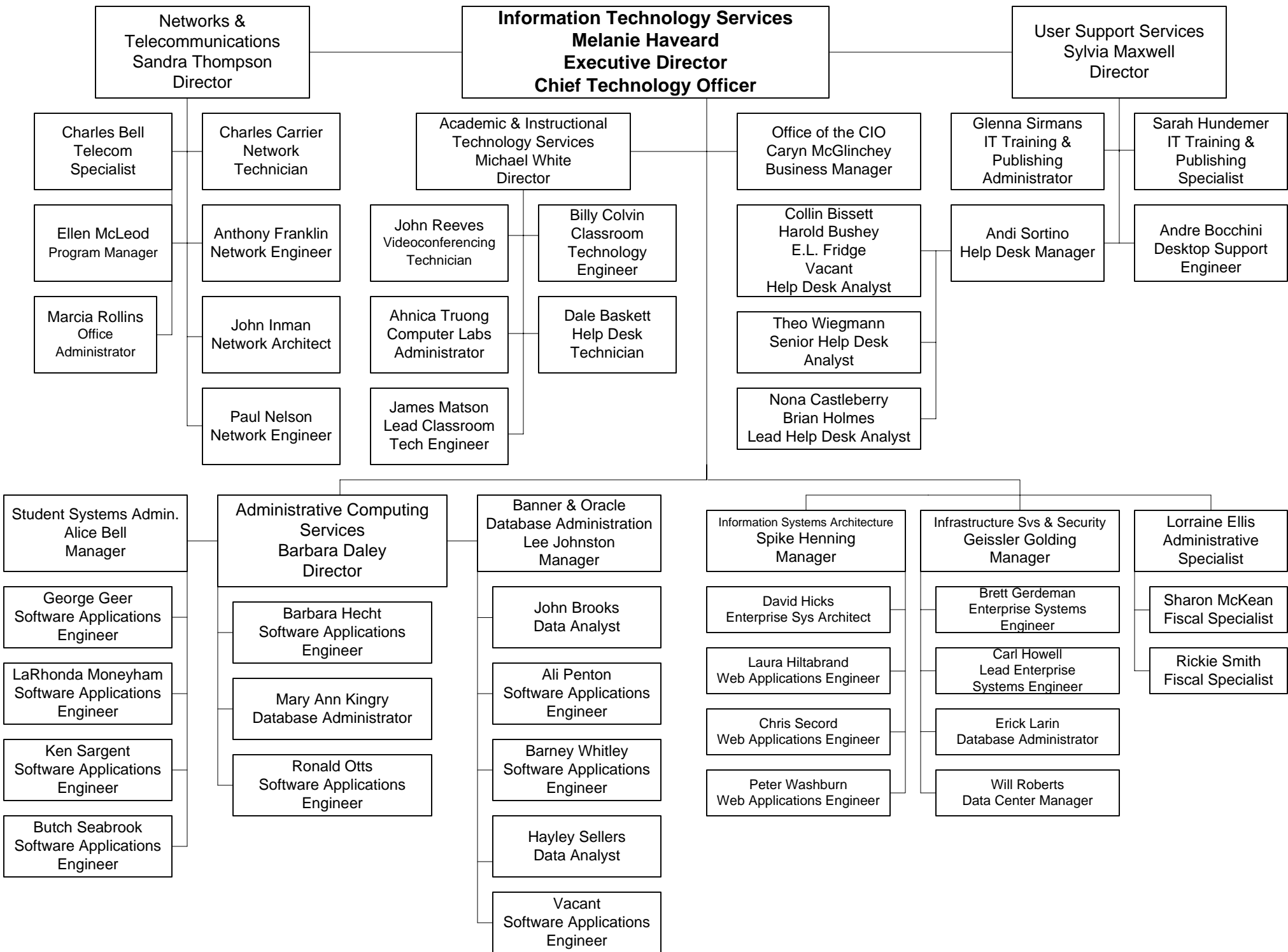


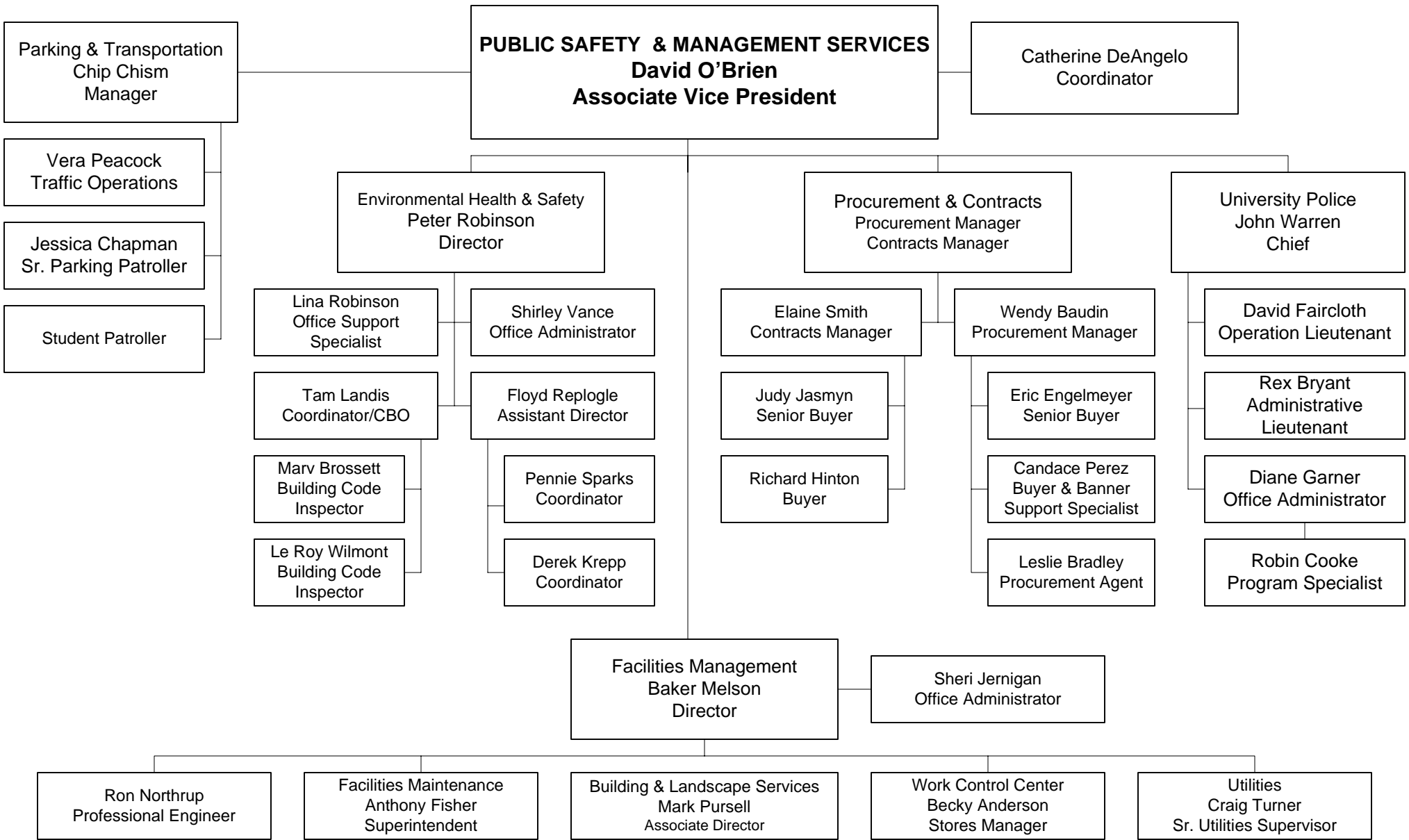


INSTITUTIONAL RESEARCH
Vacant
Director

Elaine Lavender
Associate Director

Keith King
Web Applications Engineer





UNIVERSITY AFFAIRS OFFICE
Dr. Hal White
Executive Vice President

Michael Dieckmann
Senior Associate Vice President
& Chief Information Officer

Angela Wallace
Division Budget Director

Marie Glass
Coordinator,
Administrative Services

Tiffany Nisewonger
Administrative Specialist

WUWF PUBLIC MEDIA
Pat Crawford
Executive Director

