

State of the University Address
“Taking control of our future”

President Judy Bense
September 30, 2010



Taking Control of **our Future**

- THANKS TO **ALL OF US**, WE ARE DOING FINE
- NOT OUT OF THE WOODS YET, BUT WE ARE STRONGER AND WISER
- WE ARE **MORE IN CONTROL** OF OUR FUTURE
- A **NEW ATTITUDE** ON THIS CAMPUS



2009-10 Significant Accomplishments



Academic Accomplishments



Institutes and Centers



REACH OUT TO THE STATE AND REGION

FLORIDA PUBLIC ARCHAEOLOGY NETWORK

Northeast Region
Nassau, Duval, Clay, St. Johns, Putnam, Flagler, Volusia

The Florida Public Archaeology Network serves Florida's citizens and visitors through regional centers. Each regional center is staffed with public archaeologists who can provide information, training, and volunteer opportunities.

Click on a region to visit their site.

A map of Florida is shown, divided into several colored regions. The Northeast Region is highlighted in yellow and includes Nassau, Duval, Clay, St. Johns, Putnam, Flagler, and Volusia counties.

CAP CENTER FOR APPLIED PSYCHOLOGY

CEDB
The Center for Environmental Diagnostics & Bioremediation

CEDB white bird, flowers

A photograph of a white egret standing in a pond with lily pads and white flowers.

Florida SBDC Network
Small Business Development Center

A logo for the Florida Small Business Development Center Network, featuring a green outline of Florida and the text "Florida SBDC Network" and "Small Business Development Center".

University of West Florida
Haas Center
for business research and economic development

The logo for the Haas Center at the University of West Florida, featuring the university's name and logo, and the text "Haas Center for business research and economic development".

We are GROWING PURPOSEFULLY

- 11,700 students – 5% growth this year
- 80% retention rate from Freshman to Sophomore (our highest ever)
- Higher SAT/ACT scores than the state or nation
- 167 “Top 5” students on campus
- 100% occupancy in residence halls

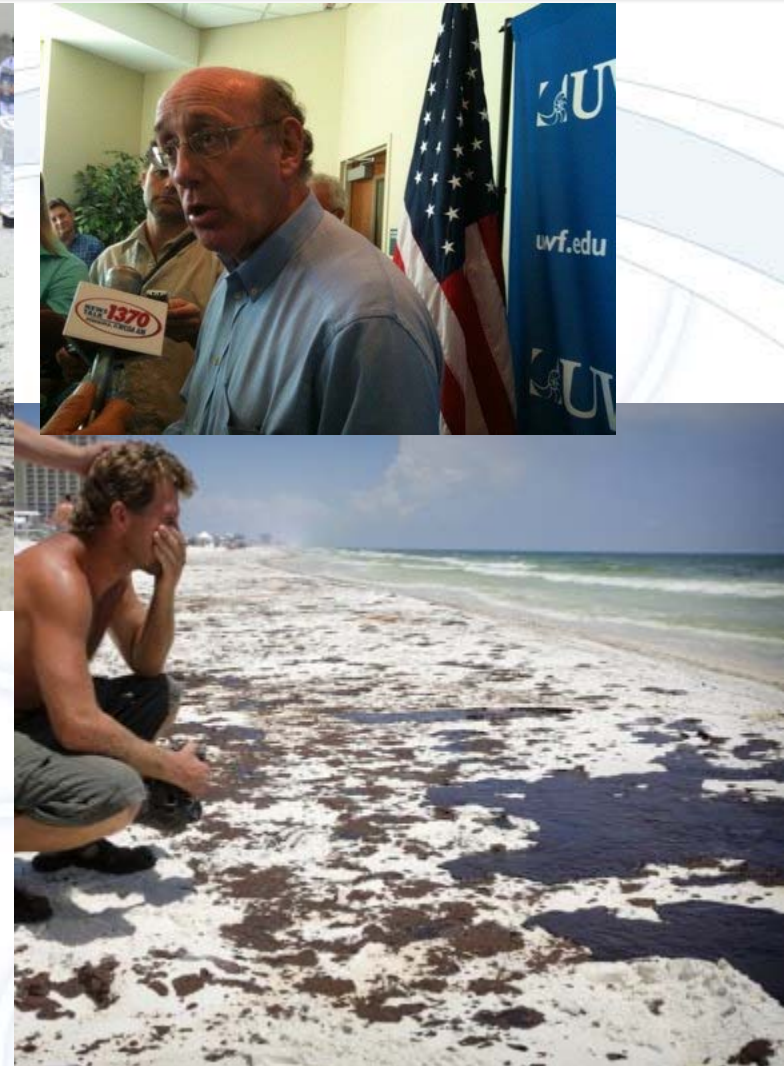
Investment in People

- First RAISE in 4 long years **1.7% salary increase... our own money this time**
- Updated tenure and promotion guidelines
- Supported professional development



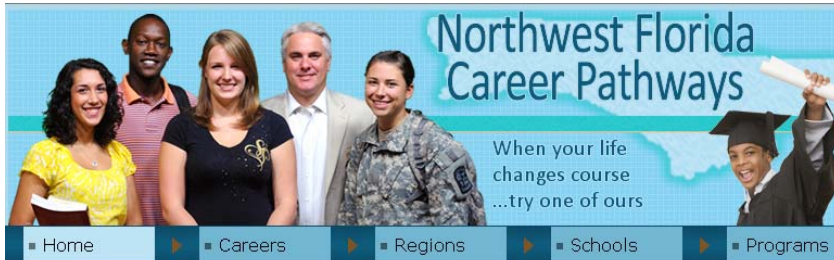
Partnerships & Collaboration

- First Responder Approach
- Ground Zero for Florida
- Many officials meeting at UWF
- Huge effort by Centers
 - CEDB
 - SBDC
 - Haas Center
- All over national news
- Oil Spill Research Grants-over \$1m



The Summer of Oil

NWFL Higher Education Coalition Partnership



Welcome to the Northwest Florida Career Pathways Portal. The Portal is designed to help you find different careers in Northwest Florida – and then, explore pathways to help you reach those career goals. Educational institutions and Workforce Development Boards throughout Northwest Florida have worked together to build this Portal to showcase careers and educational opportunities throughout Northwest Florida.

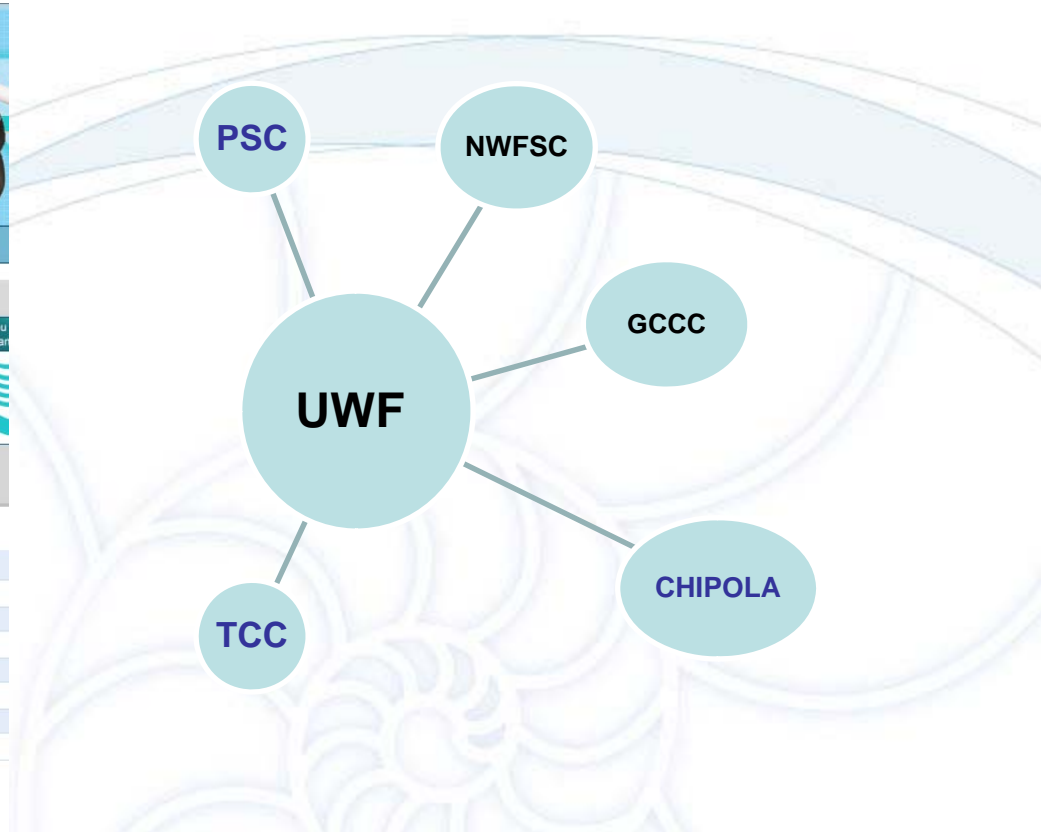


Career Path Focus

- Featured Careers**
Northwest Florida jobs are grouped into six careers. This site will help you identify a career and an occupation that interests you, and point you toward an educational program to prepare you for it.
- Occupations Highlight**
We have information on more than 400 occupations available in Northwest Florida, including salary and other information.
- Partner Spotlight**
Learn more about our partner institution, [Pensacola State College](#)

Career Pathways Events

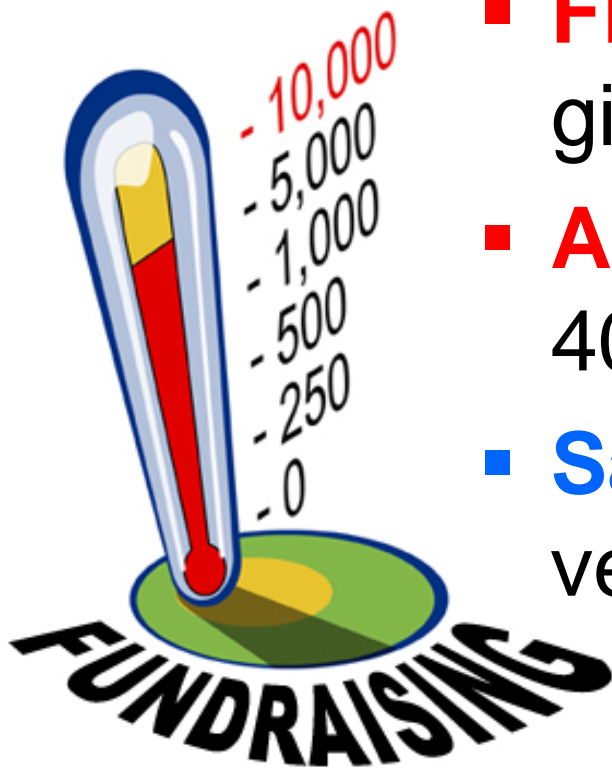
Wednesday, September 29	4:00pm Business Forum
Saturday, October 2	10:15am Open House
Thursday, October 14	9:00am Career Quest
Saturday, November 20	10:15am Open House
Showing events until 11/30. Look for more	



DIRECT ADMIT PROGRAM

Guaranteed Admission to UWF

FUND RAISING and COST SAVINGS



- **Surpassed** campaign goals
- **Fifth best** year in UWF history for giving
- **All time high** Faculty/Staff giving: 40%
- **Saved \$250K** renegotiating vendor contracts



Academic and Student Support Services



Rent Your Textbooks In-Store and Online Now.

Saved students over \$180,000



Site People

Search UWF

Career Services

Students & Alumni Services > Online Resources

[Career Services Home](#)

[Students & Alumni Services](#)

[Employers](#)

[UWF Faculty & Staff](#)

[Cooperative Education](#)

[Internships](#)

[Volunteer UWF!](#)

[Parents](#)

Job Search Strategies

There are many ways to look for a job, some are obviously better than others.

Internet Job Search

Search online job banks and company web sites. Submit resumes online or post on specific job boards.

Pros: Many employers use job boards to quickly post open positions

Cons: Competition grows as most job seekers now have access to the web

Networking

Talk to employers you know to develop a list of possible

Career Planning Guides

- [Online Resources Home](#)
- [Career Development Guide](#)
- [Resume writing tips](#)
- [Job search strategies](#)
- [Job searching using JasonQuest](#)
- [Interviewing skills](#)
- [Writing a cover letter](#)
- [Considering graduate school](#)
- [Correspondence with an employer](#)
- [How to work a career fair](#)
- [Evaluating an offer](#)

Academic and Student Support Services



Oracle
“wise one”



NEW BUILDING: School of Science and Engineering



New Residence Hall: Heritage Hall - Phase I of II



ARGO Galley – Renovation



Computer Center Renovation

Student Computer Lab

Circulation Lobby; Study; Wi-Fi



The Budget

**A New Approach is
Needed**



State Support Trend

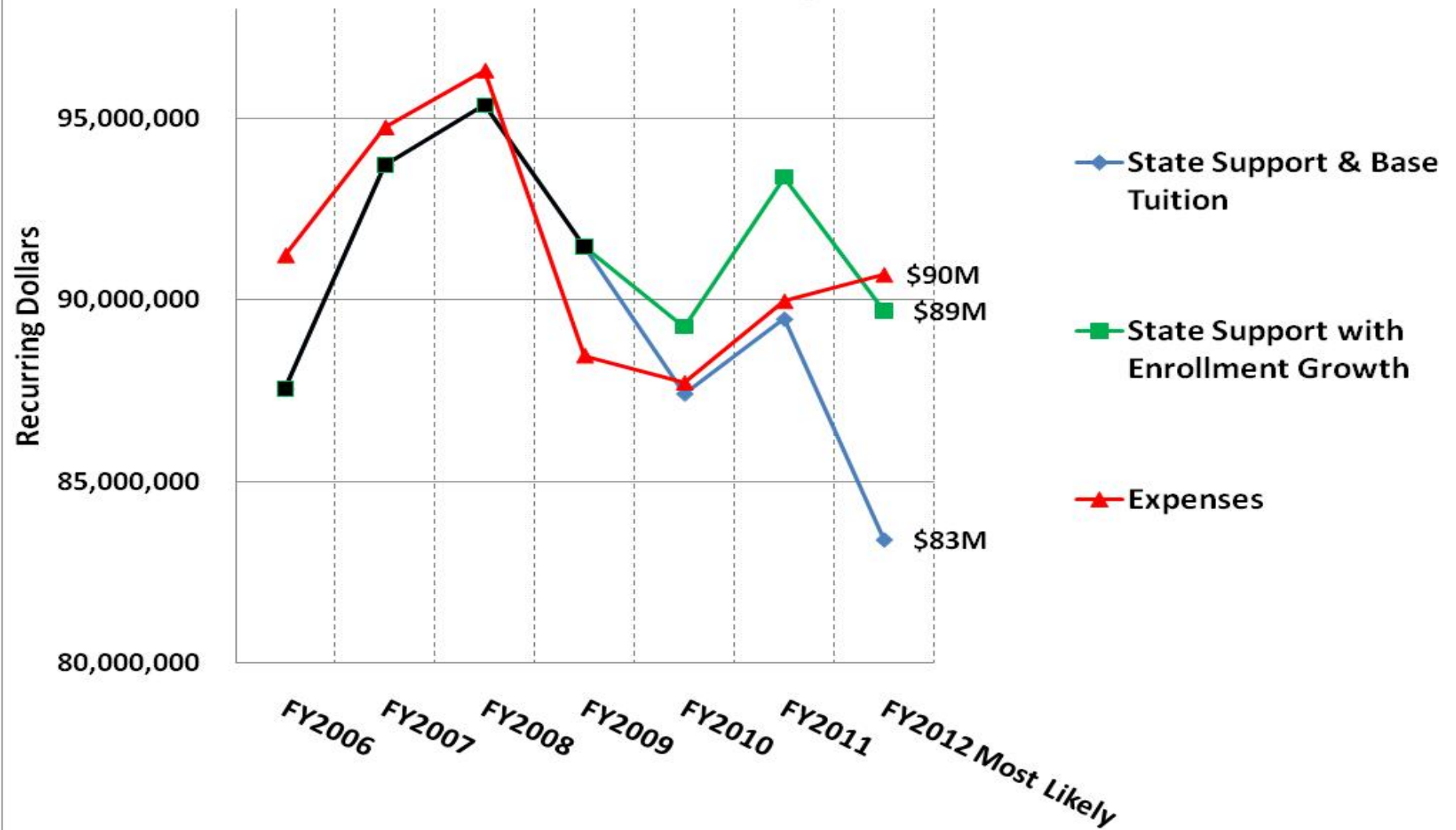
Fiscal Year	Reduction in Recurring State Support
FY2008	(3,285,810)
FY2009	(5,044,082)
FY2010	(9,408,579)
FY2011 (May Estimate was \$2.5M)	(488,830)
Four Year Total (25% from FY2007)	(18,227,301)

State Funding Problems

- This summer the Governor and Legislature required us to prepare:
 - 5% reduction model for FY2010
 - 15% reduction model for FY2011
- High level exercises
- Must expect dwindling or flat state support

State Support & Growth

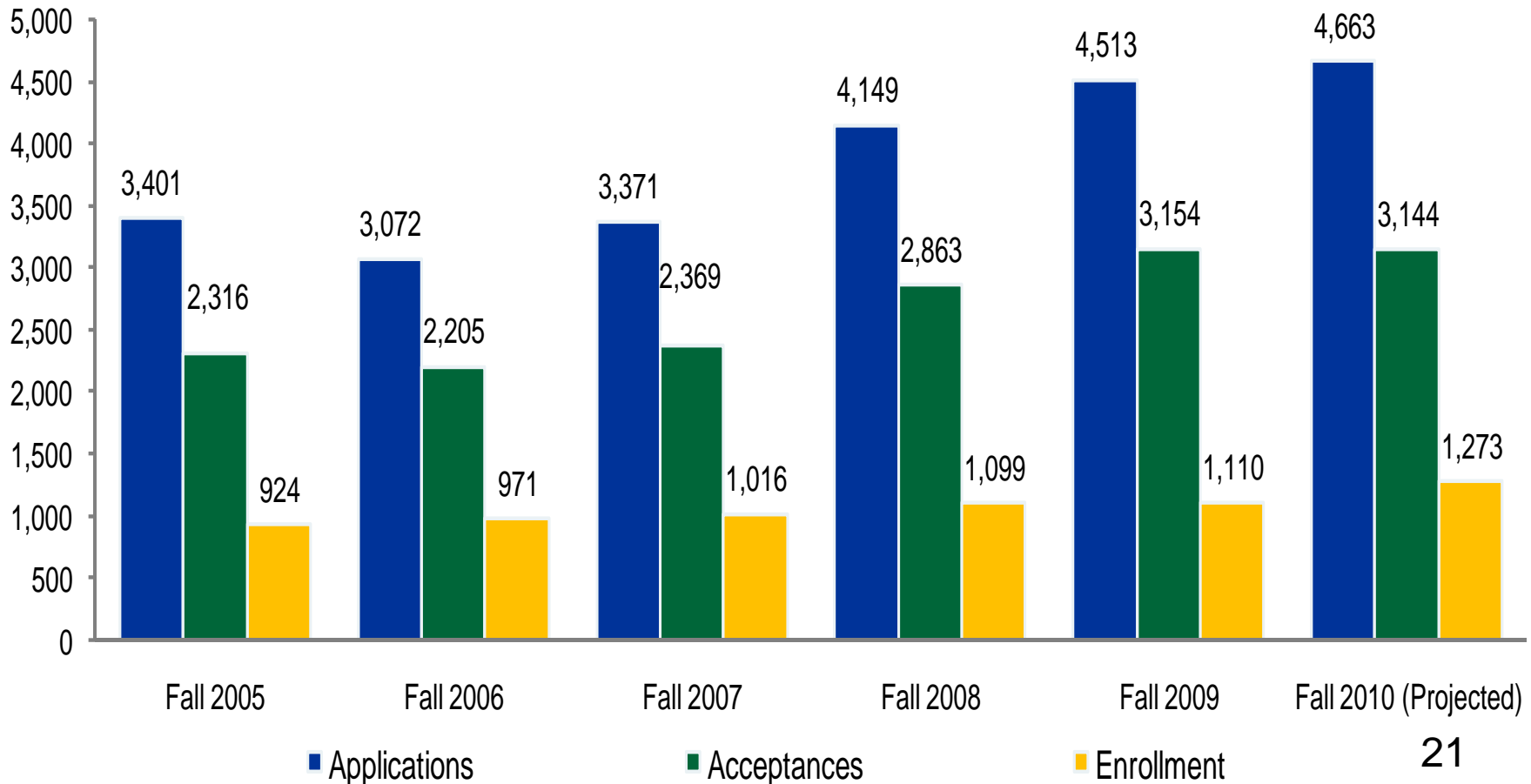
The Funding Cliff



Freshman Trends

- Undergraduate applications to the University have increased 51% from Fall 2006 to Fall 2010.

Applications, Acceptances and Enrollment



Growth is Visible

- **FACULTY**
- **RAISES**
- **Retention**
- **Student Spirit**
- **Participation in Events**
- **UWF** becoming the “**go-to**” place in our region



Student Mix

Current

Goal

1736/14.9%

Grad Students

3420/29.4%

Seniors

2984/25.6%

Juniors

1162/10.3%

Sophomores

1556/13.3%

Freshmen

760/6.5%

Non-Degree

More
graduate
students

The
undergraduate
goal

Times Changing: We Must Adjust

- **Trustees:** High Performing Boards & Strategic Finance Workshops
- **Senior Leadership:** Retreats all summer
- **Joining Planning and Budgeting**
 - Research Group
- **Data Based Decisions:**
 - Internal data organization
 - Professional consultant assistance
- **Emerald Coast:** Taking a fresh look

Focus for success

- **We cannot be all things to all people**
- **Grow our traditional University campus @ Pensacola**
- **Grow non-traditional adult students**
- **Tie spending to our plan**
- **Be more accountable**
- **Be true to mission**

Strategic Planning and Budgeting

- **WHAT IT MEANS**
- **WHEN? NEXT YEAR**
- **HOW IT WORKS**
- **FOCUS, FOCUS, FOCUS**

University-Wide Engagement

- Budget & planning best practices to emerge soon
- Delaware study
- Institutional Research workgroup

Preparing for our new future



Bldg. 70 – Before Renovation- Applied Sciences and Technology



Bldg. 70 – After Renovation: Applied Sciences and Technology



Health and Wellness Center



Main Entrance Elevation Viewing Northeast



Building Champions for Life

- 5 National Championships
- 54 GSC Championships
- 3 GSC Men's All-Sports Trophies
- 5 GSC Commissioner's Trophies
- 8 GSC Women's All-Sports Trophies

Athletics Master Plan



Athletics Master Plan

EAST SPORTS COMPLEX



West Campus

East Campus

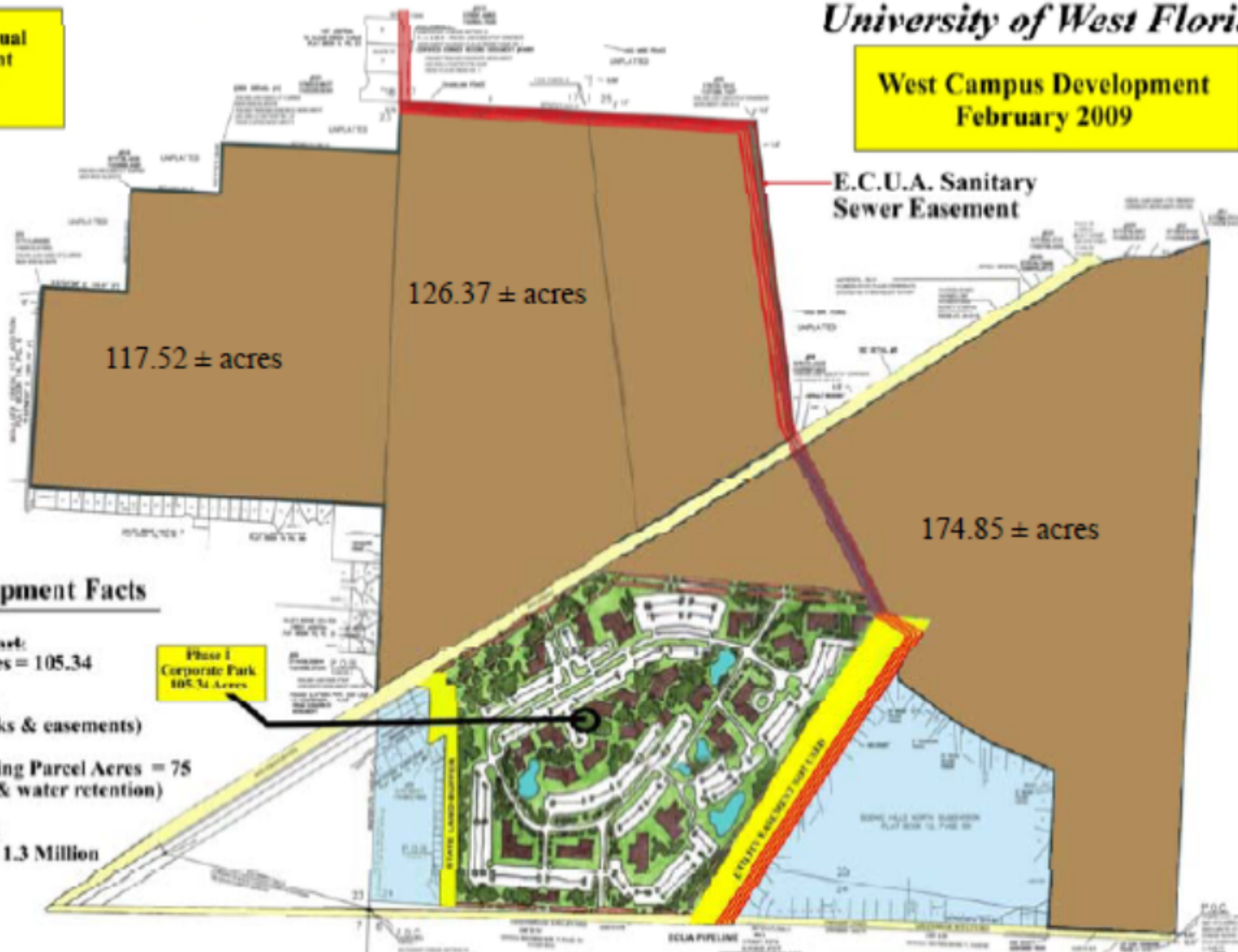


B.O.T. - Campus Master Plan Update and Proposed Deeded Land Exchange – December, 2008

University of West Florida

For Conceptual
Development
Purposes
Only

West Campus Development
February 2009



Conceptual Development Facts

- Phase I Corporate Park:
Undeveloped Acres = 105.34
- Buildable Acres = 90
(excluding setbacks & easements)
- Private Sector Building Parcel Acres = 75
(excluding roads & water retention)
- Gross Sq. Feet of 2-3
Level Buildings = 1.3 Million

Phase I
Corporate Park
105.34 Acres

Escambia County - West Campus Road Improvements & New Bridge Planning



Master Plan Update



The Year Ahead

- Get **engaged**
- Purposeful **growth**: 12,200 for Fall 2011
- Starts at home:

- your kids and their friends
- improve our **retention** by 1%

- **Participate** in student life

Attend one event a week

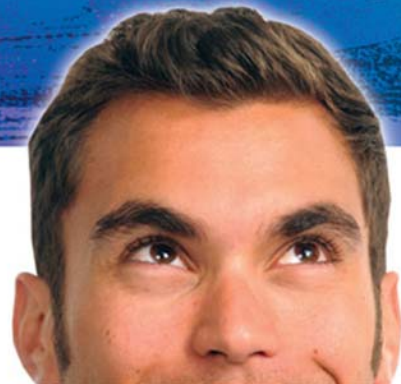
- Show **your** pride: get and wear

Argo gear <http://www.argofanshop.com>



More Than You

**Think
UWF.**



uwf.edu/think



More Than You

**Think
UWF.**

**Fall
Recruitment
Campaign**

http://www.youtube.com/watch?v=BOU2hf2W_bI



uwf.edu/think



Questions ?



University of
West Florida

A large, rectangular stone sign with a flat top and a base of reddish-brown bricks. The sign is set in a landscaped area with a bed of yellow, white, and purple flowers in the foreground. In the background, there are tall pine trees and a paved road.