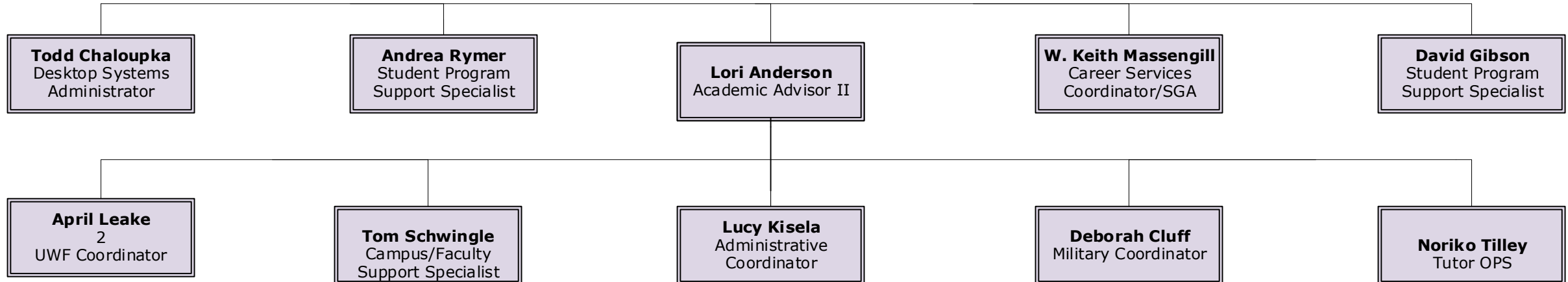


University of West Florida Emerald Coast
 Organization Chart
 (as of October 12, 2018)

Dr. Melinda S. Bowers
 Associate Vice President



ELECTRICAL & COMP ENGINEERING FACULTY:
 Dr. Tom Gilbar
 Dr. Andreas Fuchs
 Dr. Bassam Shaer

MECHANICAL ENGINEERING FACULTY:
 John Ireton

Charlotte Stovall
 Office Assistant

Craig Anderson
 Program Manager

CRIMINOLOGY & CRIMINAL JUSTICE FACULTY:
 Dr. Kathy Johnson

LIBRARY:
 Paul Williford, Director
 Flora Jettner, UWF Information Specialist
 Russell Salsman, NWF Information Specialist

SBDC—FWB (815 Beal Pkwy, Ste A)
 Adam McCloskey, Associate Director
 John DiGiacomo, Gov Contract Specialist
 Ayesha Haider, Consultant
 Diana Jernigan, OPS Office Specialist
 Brenda McCastle, Consultant

MANAGEMENT & MIS FACULTY:
 Dr. Marian Schultz

COMMUNICATION PROGRAM:
 Ms. Christine Flynn

COUNSELING & WELLNESS SERVICES:
 Maryjo Hardin, Sr LMHC

ACADEMIC TECH CENTER:
 Cindy Mersereau,
 Sr Inst Designer/Dev

GLOBAL HOSPITALITY & TOURISM MANAGEMENT FACULTY:
 Dr. Andy Holdnak