

● ● ● ● ● ● ● ● ● ●

Welcome to VPK/Preschool

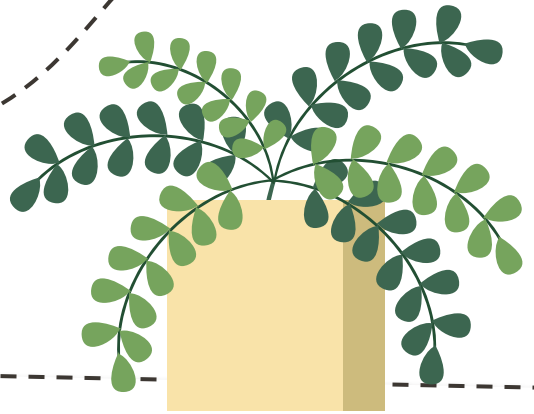
III

Mrs. Wendy

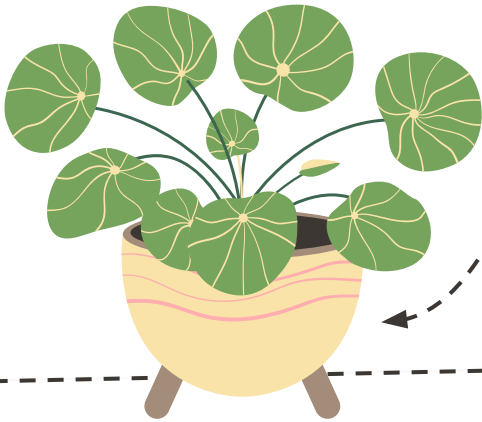


Table of Contents

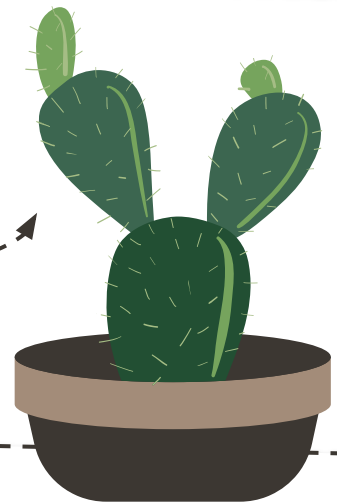
Welcome from
Mrs. Wendy



Important
Reminders



Readiness
Standards for 5
year olds



Holidays and
School Closures



Meet the Teacher

Mrs. Wendy



Experience

*13 years in Early
Childhood Education*

Favorites

*Hobbies: Reading, Music
and Gardening
Food: Fruit, Popcorn,
Reese's*

Welcome Message

Welcome to VPK/Preschool III

My name is Wendy Mott and my teaching

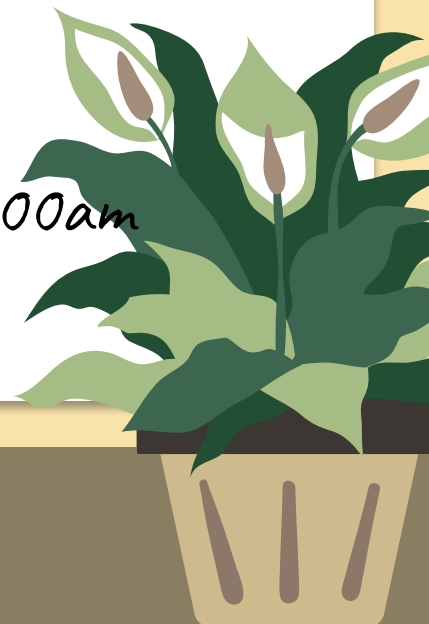
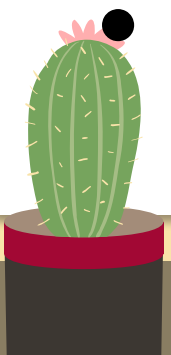
philosophy is: All Children Can Learn.

Contact: wmott@uwf.edu

850-474-2195

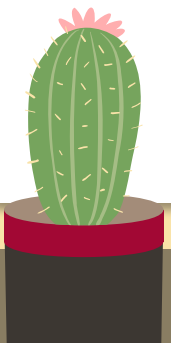
Important Information

- *Drop Off-Your child should be here no later than 8:30. Please let us know ahead of time if you are not going to be in attendance by either phone, email, or verbal communication. If your child is not here by 10:30 then we are obligated to call the parent or emergency contact person.*
- *Labeling-In order to ensure proper placement of things brought to school, we ask that you label everything belonging to your child.*
- *Shoes- Please send your child to school in close toed, close heeled shoes for the outside playground.*
- *Snack-Snacks are served daily at 9:00am and 3:00pm.*



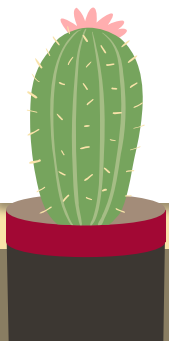
Important Information

- *Lunch- Please provide a nutritional lunch for child. You may provide water, juice, or milk with your child's lunch. Not Allowed: Capri Sun, Soda, Coffee, or Tea Frozen Meals Instant Mac and Cheese, Oatmeal, or Candy*
- *Personal Toys-Toys from home are not allowed. We are not responsible for any lost, damaged or misplaced toys brought from home. NO BOOKBAGS*
- *NapTime- Your child will need a "Travel size" pillow and blanket. Naptime mats will be kept on shelves in the classroom. Children do not have to sleep but they must be quiet and respectful of others.*



Important Information

- *Extra Clothes- Please provide two extra sets of clothes to be kept in their cubby. NO BOOKBAGS*
- *Birthdays- Keep it simple by providing store bought cupcakes to be served at morning or afternoon snack.*
- *Classroom Communication-Communication between Lead Teacher and parents will be verbal communication or via email. You may also call the center at 850-474-2195 if there is an urgent matter.*



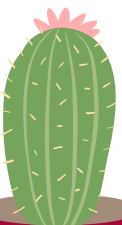
Medication

Protocols for administering, handling and storing of medication for every child are in place.

The Lead Teacher is responsible for administering the medication to children. A legal guardian must fill out a medication form.

If the form is not filled out completely or correctly, then the staff cannot administer the medication to that child.

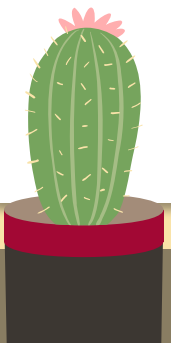
Another staff member must witness the medication being given to the child at the correct dosage and must sign as a witness with the Lead Teacher on a Medication Log. Medication will be stored in a locked cabinet in the classroom. If the medication needs to be kept cool, then it will be stored in a locked container in the refrigerator.





Social and Emotional Development

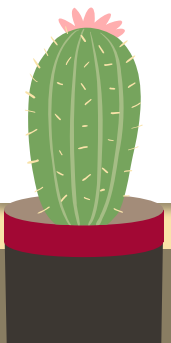
- *Teachers encourage children to regulate their emotions and expand their vocabulary and social interaction. We want to encourage language development with each child. We strive to teach the children independence and how to manage social problems. We encourage the students to either use their words or express their feelings toward one another. Sometimes, we have to give them words to help them. We strive to teach children how to handle social conflicts with independence.*
- *Written behavior intervention plans will be made for students collaboratively with parents, professionals and teachers. We*
- *use the conscience discipline program as a guide to effective strategies.*





Cognitive Development and General Knowledge

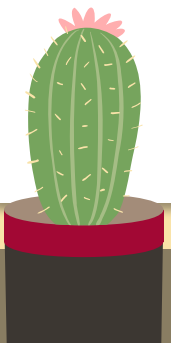
- *Anticipates, remembers and describes stories/events in sequence.*
- *Recognizes patterns and duplicates or extends them.*
- *Sorts objects into subgroups, classifying and comparing according to rule. Demonstrates the understanding of the concept of number and quantity.*
- *Begins to understand relationships between quantities- more/less, all/none and many/few.*
- *Recognizes and describes some*
- *attributes of shapes.*
- *Shows an understanding of direction, location, and positional words.*





Cognitive Development and General Knowledge

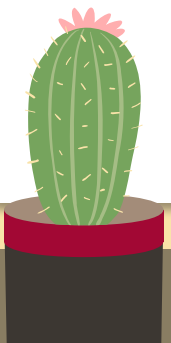
- *Orders, compares, describes objects by length, size, capacity and weight.*
- *Shows an awareness of time concepts.*
- *Seeks information through observations, explorations and descriptive investigations.*
- *Demonstrates an awareness of reason for rules.*
- *Leadership skills begin to emerge.*
- *Beginning of awareness of people and where they live.*
- *Uses a variety of art materials to express ideas and emotions.*





Motor Development

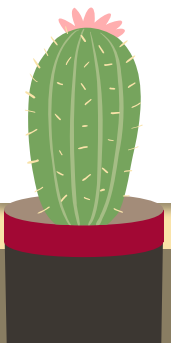
- *Uses balance and control to perform large motor tasks.*
- *Uses strength and control to perform small motor tasks.*
- *Uses hand-eye coordination for fine motor tasks.*
- *Uses writing and drawing tools with some control.*





Physical and Approaches to Learning

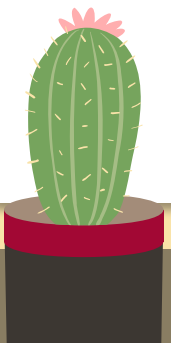
- *General good health: physical, auditory, visual, and motor skills*
- *Able to perform self care task with competence*
- *Exhibits an eagerness and curiosity for learning*
- *Sustains attention to task*
- *Flexible and inventive when problem solving*





Social and Emotional

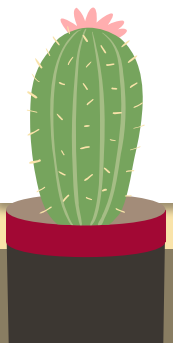
- *Shows initiative, self direction, self confidence, self control*
- *Demonstrates beginning conflict resolution skills*
- *Handles transitions and adapt changes in routine*
- *Interacts easily with peers and adults*
- *Exhibits empathy and caring for others.*





Language and Communication

- *Listens, participates and attends to songs and stories*
- *Follows a series of directions*
- *Speaks clearly and conveys ideas effectively*
- *Shows interest in books and reading*
- *Demonstrates some conventions of print*
- *Recognize letters and sounds and how they form words*
- *Recognizes and writes own name*
- *Represents stories through pictures, dictation, and play*
- *Uses inventive spelling and symbols to convey meaning*



Class Schedule

7:30-8:30 Welcome/Morning Routine

8:30-8:45 Center Time/Table Activities

8:45-9:00 Morning Circle/Large Group Meeting

9:00-9:15 Snack

9:15-9:30 Story Time

9:30-10:15 Child Directed Center Time/Bathroom

10:15-10:30 Music and Movement

10:30-11:00 Small Groups

11:00-11:20 Phonological Awareness

11:20-11:30 Closing/Large Group Recap

11:30-12:00 Outside Time

12:00-12:30 Lunch

12:30-2:30 Rest Time

2:30-3:00 Afternoon Snack/Bathroom

3:00-4:00 Outside Activities

4:00-5:30 Limited Centers/Activities



Mrs. Wendy's WISH LIST

I WANT

Empty Veggie/Fruit Cans

Empty Oatmeal Containers

Stickers/Masking Tape

Sidewalk Chalk



I NEED

Crayola Crayons/Markers

Dry Erase Markers/Expo

Colored Pencils

Glue Bottles/Sticks





Thanks!

I look forward to this year and all that we can accomplish together.

