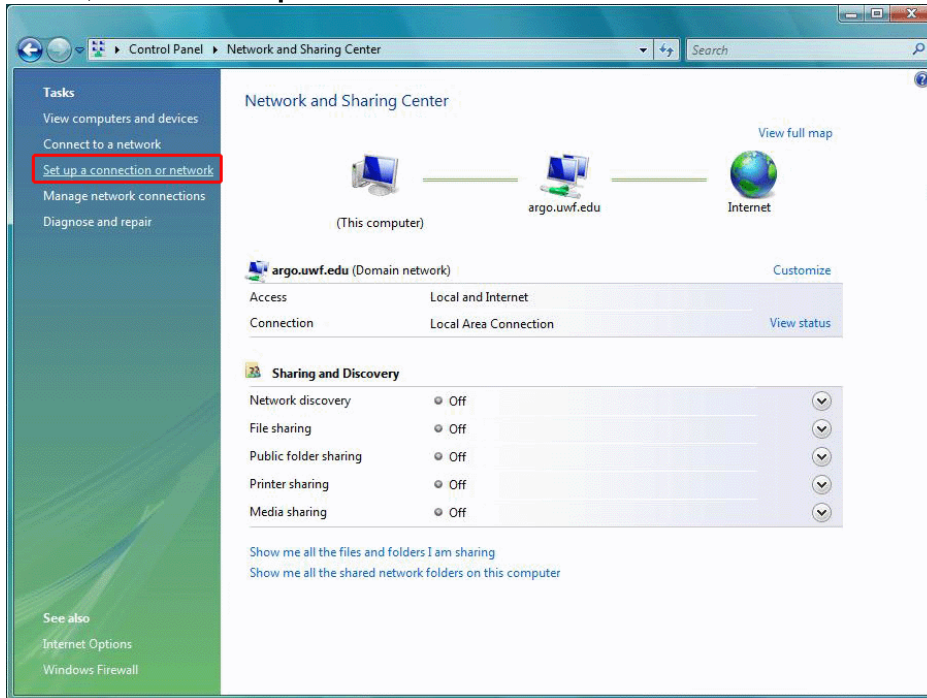


# Setup Instructions for ArgoAir Wireless Network Windows Vista

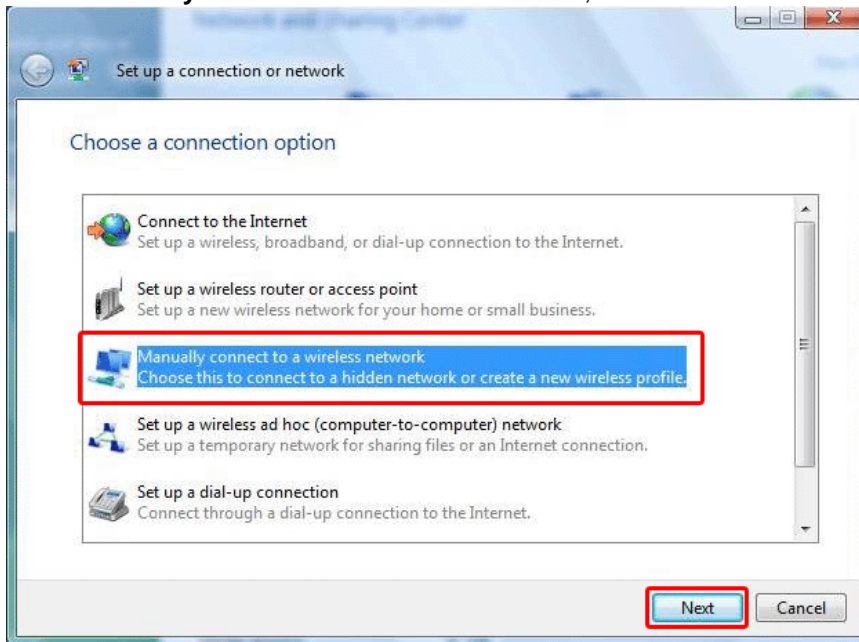


*University Guests: A username and password are required to use ArgoAir. Your UWF host can obtain a guest ArgoAir account from the ITS Help Desk or a Local Service Provider.*

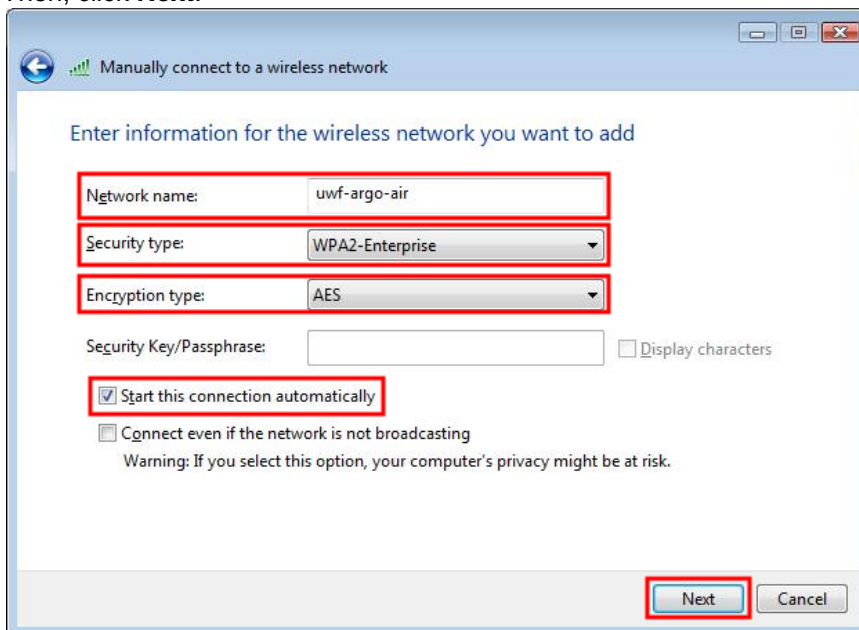
1. From the Start menu open the **Control Panel**, click **Network and Internet**, click **Network and Sharing Center**, and click **Set up a connection or network**.



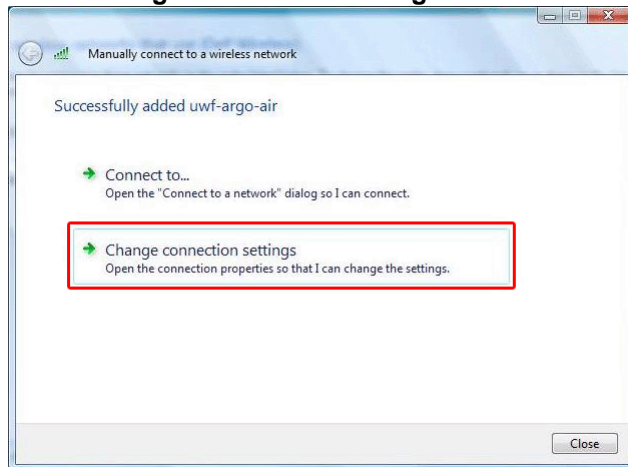
2. Select **Manually connect to a wireless network**, then click **Next**.



3. Enter the following:
- Network name: **uwf-argo-air**
  - Security type: **WPA2-Enterprise**
  - Encryption type: **AES**
  - Place a checkmark beside **Start this connection automatically**.
- Then, click **Next**.

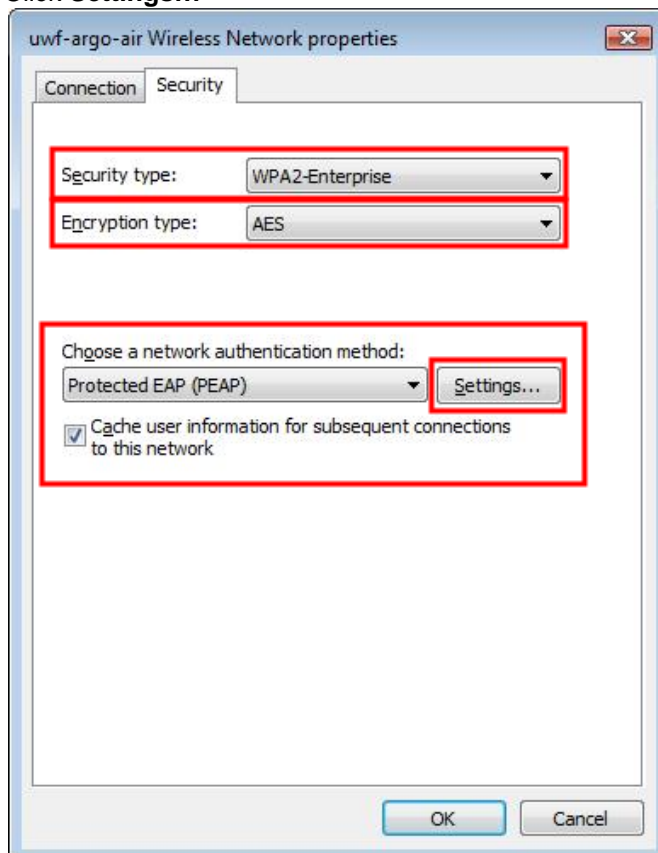


4. Select **Change connection settings**.

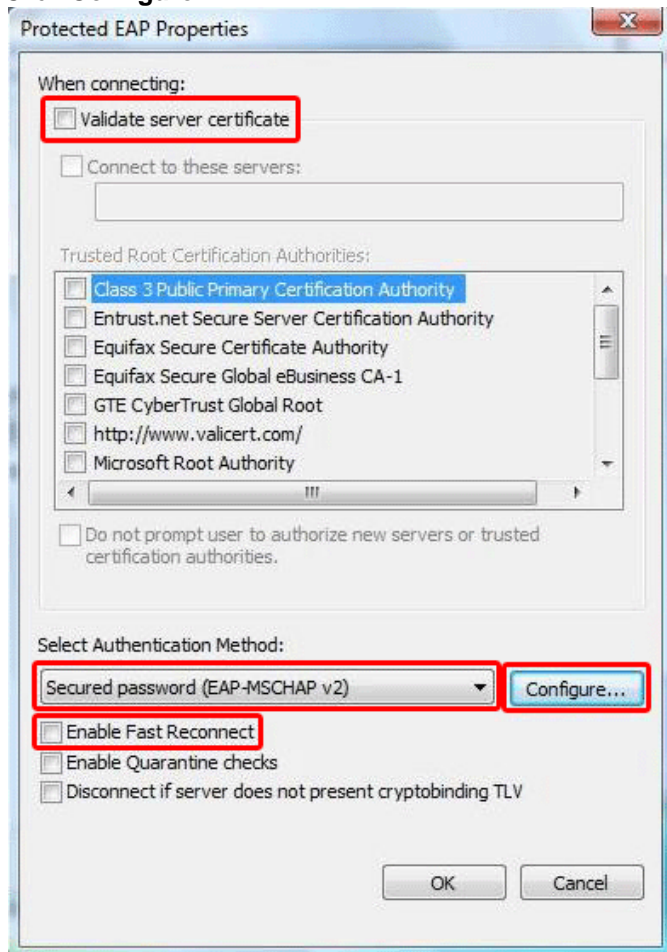


5. Enter the following:

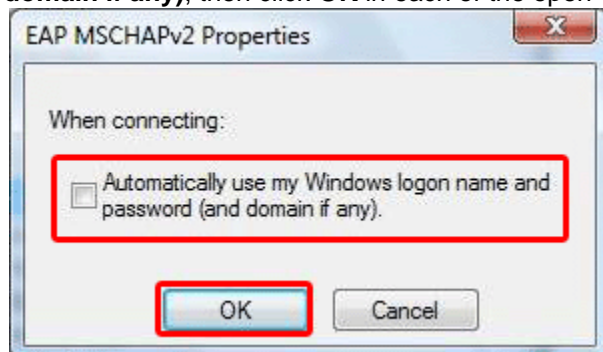
- Security Type: **WPA2-Enterprise**
  - Encryption Type: **AES**
  - Choose a network authentication method: **Protected EAP (PEAP)**
  - Place a checkmark beside **Cache user information for subsequent connections to this network**
- Click **Settings...**



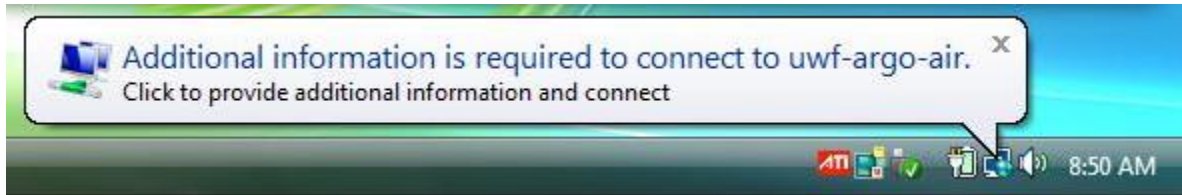
6. Verify the following:
- Validate server certificate IS NOT checked
  - Authentication Method: **Secured password (EAP-MSCHAP v2)**
  - Enable Fast Reconnect IS NOT checked
- Click **Configure...**



7. REMOVE the checkmark from **Automatically use my Windows logon name and password (and domain if any)**, then click **OK** in each of the open windows.



8. When in the range of the wireless network, Windows will attempt to connect. When Windows Vista attempts to connect for the first time, a balloon pop-up will appear in the taskbar.  
**Click the balloon.**



9. Enter the following:
- In the **User name** field, enter your ArgoNet username.
  - In the **Password** field, enter your ArgoNet password.
  - Leave the **Logon domain** field blank.
- Click **OK**. Windows will log into the ArgoAir network.



10. After you connect for the first time, Windows remembers your credentials and will automatically log into the network without asking you to reenter your username and password. Windows will only ask for your username and password again if you change your password.
11. In order to print to a WEPA kiosk from your computer, download WEPA print drivers from [wepanow.com](http://wepanow.com). Your WEPA username and password was sent to you in an email from WEPA. This WEPA account is linked to your Nautilus Card account. For more information on WEPA printing, see [uwf.edu/studentprinting](http://uwf.edu/studentprinting).



If you have questions, please contact the ITS Help Desk at (850) 474-2075 or [helpdesk@uwf.edu](mailto:helpdesk@uwf.edu).