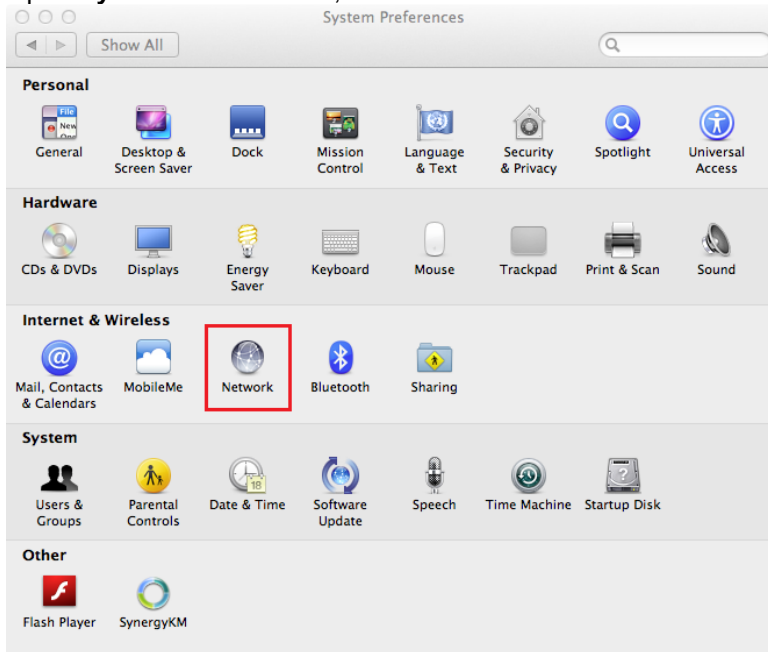


Setup Instructions for Configure ArgoAir Wireless Network Mac OS 10.7 Lion

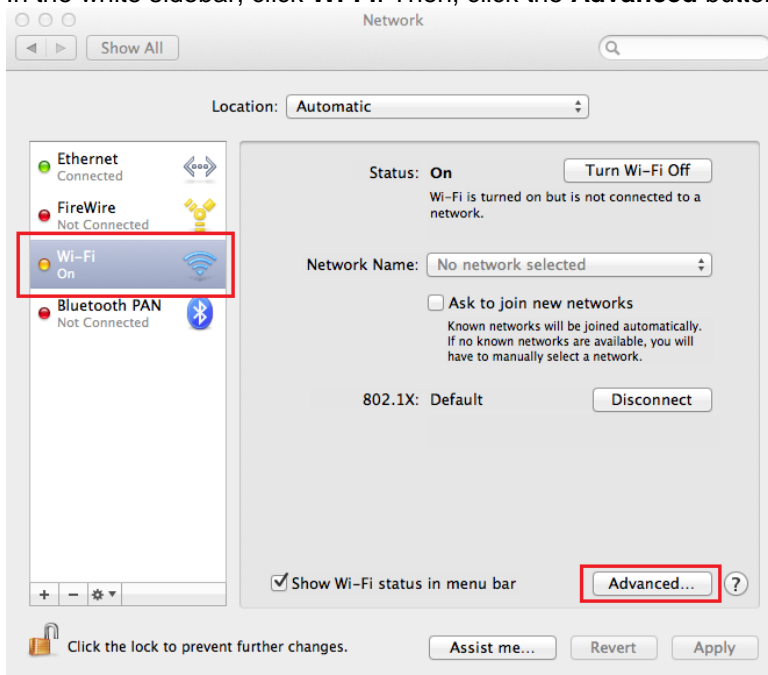


University Guests: A username and password are required to use ArgoAir. Your UWF host can obtain a guest ArgoAir account from the ITS Help Desk or a Local Support Provider.

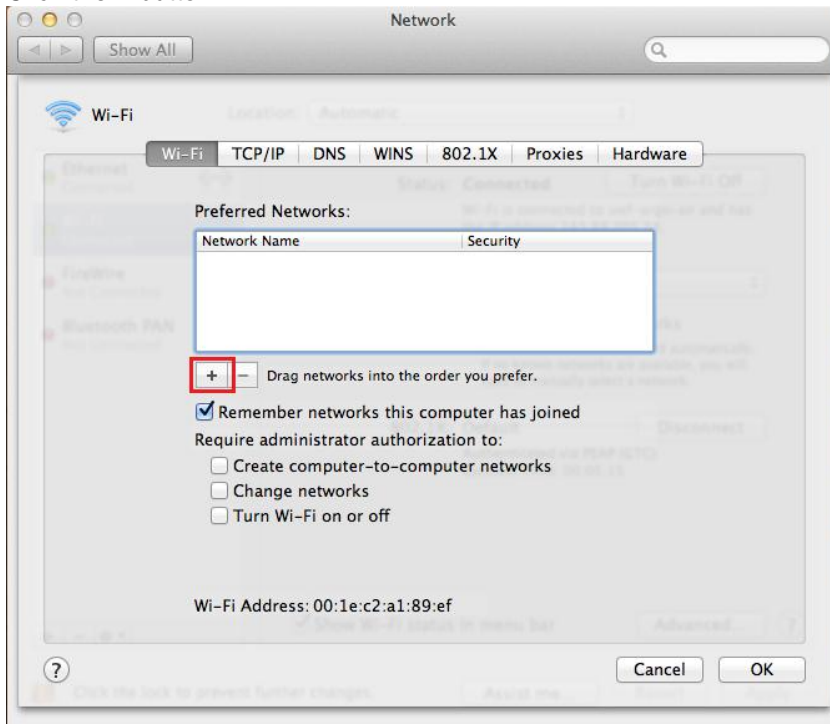
1. Open **System Preferences**, and then click the **Network** icon.



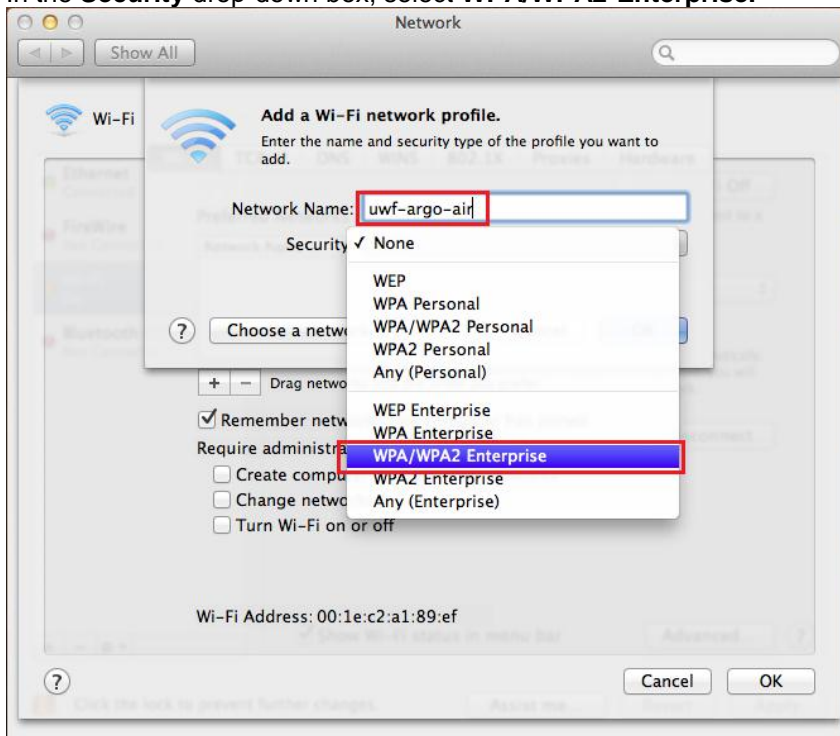
2. In the white sidebar, click **Wi-Fi**. Then, click the **Advanced** button.



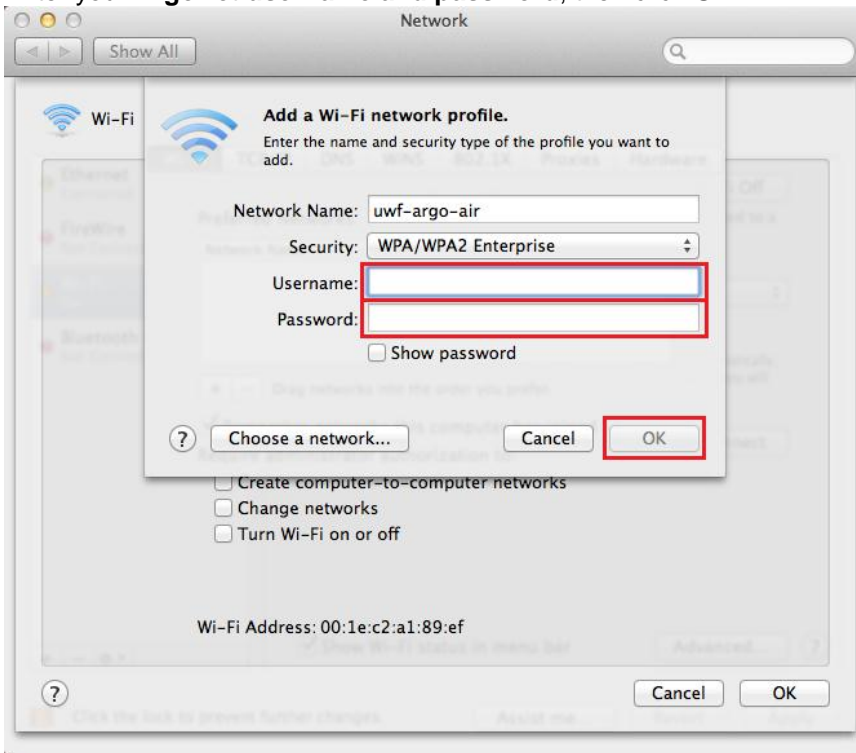
3. Click the + button.



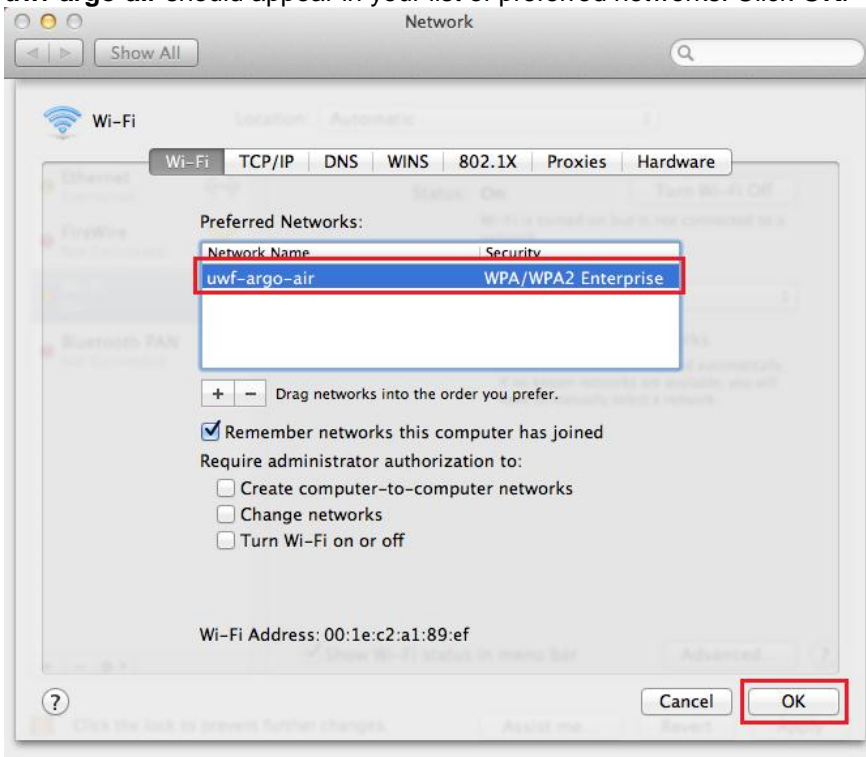
4. Beside **Network Name**, type **uwf-argo-air**.
In the **Security** drop-down box, select **WPA/WPA2-Enterprise**.



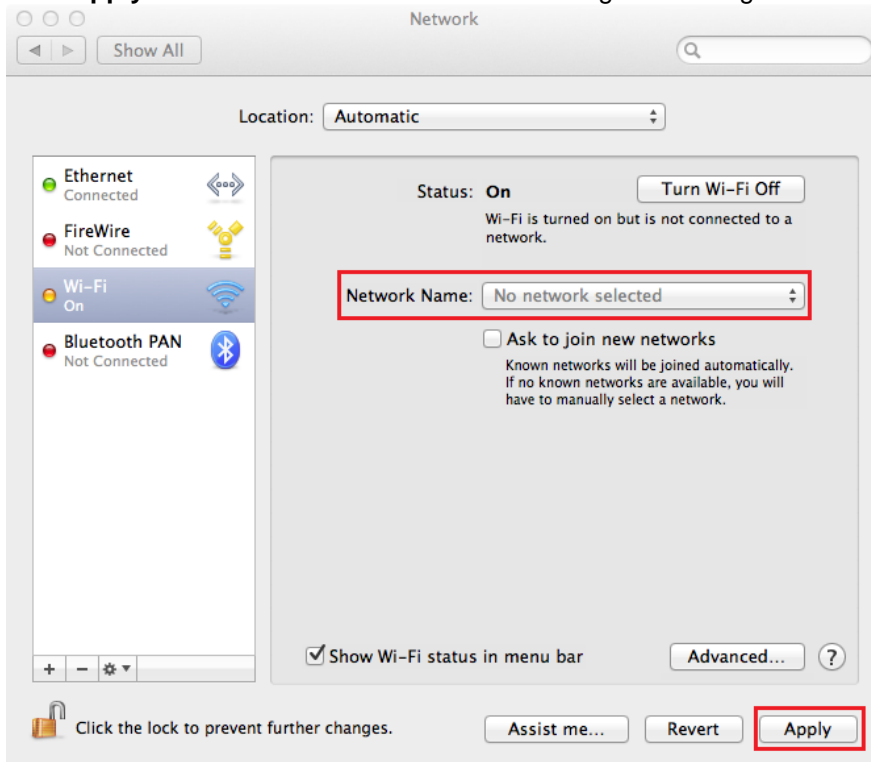
5. Enter your **ArgoNet** username and password, then click **OK**.



6. **uwf-argo-air** should appear in your list of preferred networks. Click **OK**.



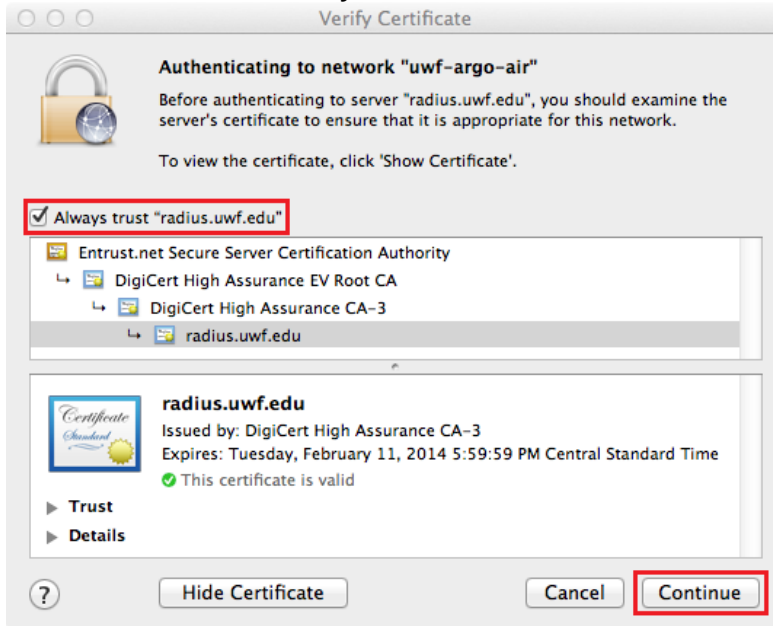
7. Click **Apply**. The Network Name box should change to uwf-argo-air.



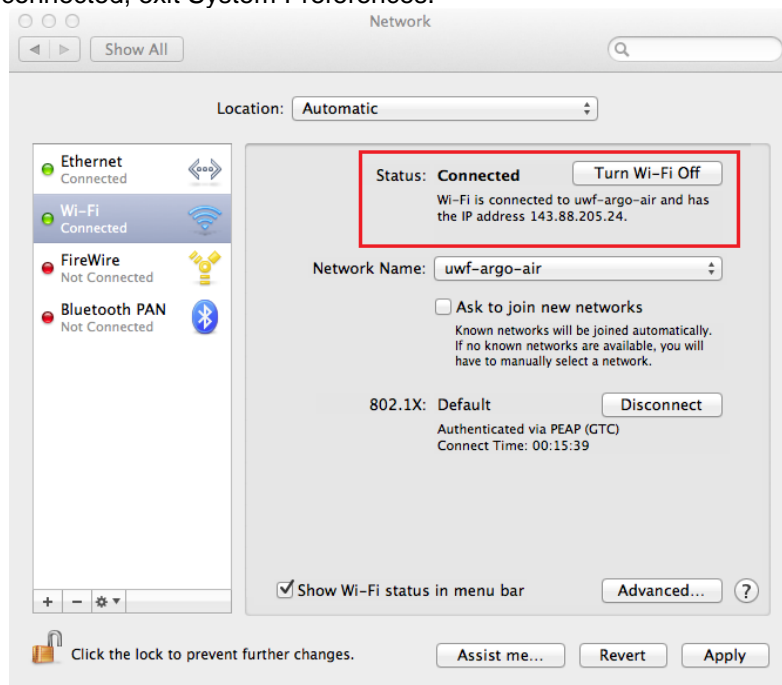
8. Click **Show Certificate**.



9. Check the box labeled **Always trust "radius.uwf.edu"**. Click **Continue**.



10. If your Wi-Fi connection is off, turn it on now. If you are in the ArgoAir coverage area, it should connect automatically. Try opening a website to confirm that you are connected to the Internet. Once you are connected, exit System Preferences.



11. In order to print to a WEPA kiosk from your computer, download WEPA print drivers from wepanow.com. Your WEPA username and password was sent to you in an email from WEPA. This WEPA account is linked to your Nautilus Card account. For more information on WEPA printing, see uwf.edu/studentprinting.



If you have questions, please contact the ITS Help Desk at (850) 474-2075 or helpdesk@uwf.edu.