



Division of Academic  
Engagement and  
Student Affairs

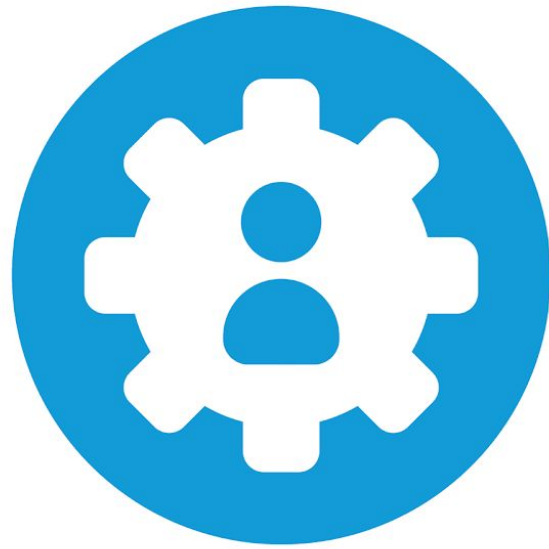
UNIVERSITY *of* WEST FLORIDA

Jennifer L. McCaul, Ph.D.  
Executive Director  
Center for Academic Success

[uwf.edu/success](http://uwf.edu/success)

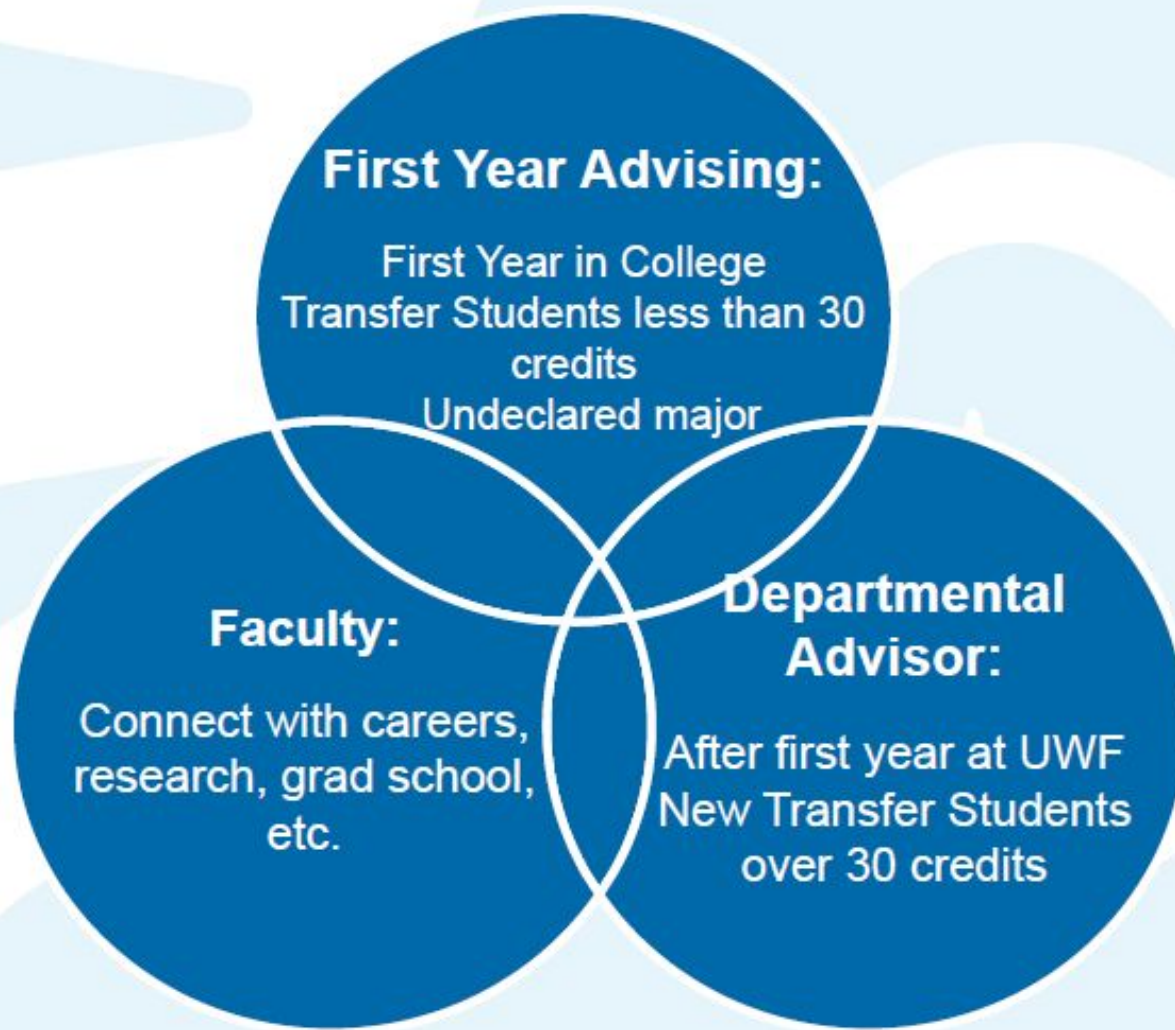
Sara Halstead  
Assistant Director  
Tutoring and Learning Resources

[uwf.edu/tlr](http://uwf.edu/tlr)



# The Self-Directed Learners' Path to Success

- 1. Academic Advising*
- 2. Academic Support*
- 3. High Impact Experience*
- 4. Career Development*



**120**

credits MINIMUM  
to earn a  
bachelor's  
with several  
components



Fulfillment of the  
Gordon Rule

**48**

48 hours of upper  
level course work



Satisfy admissions  
Foreign Language  
requirement

**24**

24 semester  
hours of upper  
level credits in the  
major (18 of those  
earned at UWF)



Completion  
of General  
Education  
curriculum

**2.0**

MINIMUM UWF  
cumulative GPA  
2.00 GPA with a  
major GPA of 2.00



Completion of program  
specific lower division  
common prerequisites

**25%**

25% of degree  
credits earned at  
UWF



Completion of  
multicultural  
requirement

**30**

Last 30 semester  
hours earned at UWF



Completion of civic  
literacy requirement

**9**

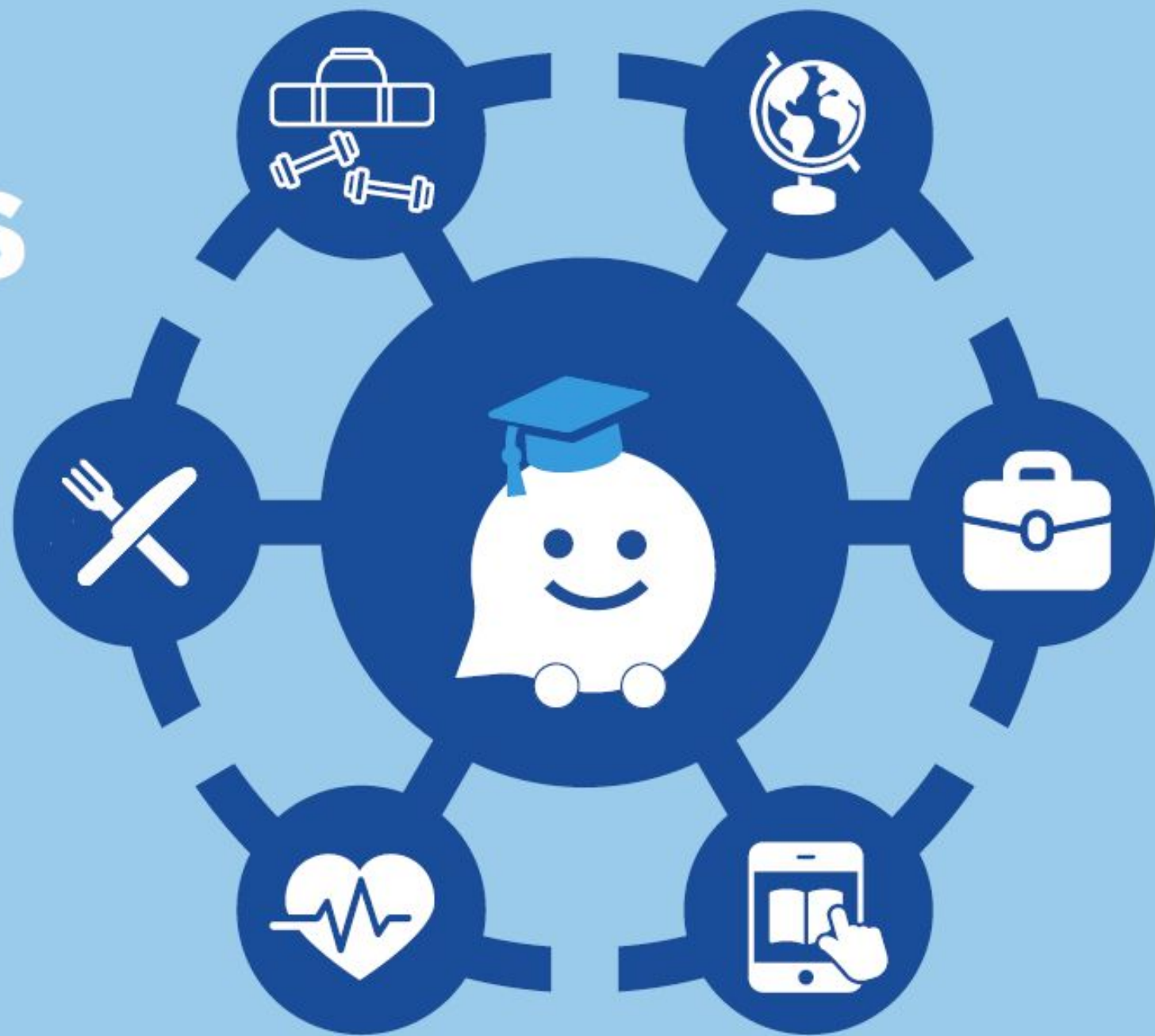
Nine (9) credits of  
summer coursework  
at SUS



Major program  
requirements

***Degree  
Requirements***

# UWF RESOURCES



# FIRST YEAR **EXPERIENCE**



- Connect with faculty, staff and other campus partners
- Participate in events and activities that enhance your college experience
- Get involved on campus with fellow first year peers
- Share your experiences with peers through playlists and social media

# HEALTH AND WELLNESS



# GROWTH MINDSET

## What Kind of Mindset Do You Have?



I can learn anything I want to.  
When I'm frustrated, I persevere.  
I want to challenge myself.  
When I fail, I learn.  
Tell me I try hard.  
If you succeed, I'm inspired.  
My effort and attitude determine everything.



I'm either good at it, or I'm not.  
When I'm frustrated, I give up.  
I don't like to be challenged.  
When I fail, I'm no good.  
Tell me I'm smart.  
If you succeed, I feel threatened.  
My abilities determine everything.



# GROWTH MINDSET FORMULA

Understand that no matter what your natural aptitude; **effort** is essential to improve and achieve  
Persistently committed and motivated  
I can get better with **effort** and hard work



EFFORT



Seek **strategies** to improve  
Setbacks highlight issues/problems that need to be dealt with and learnt from



STRATEGIES

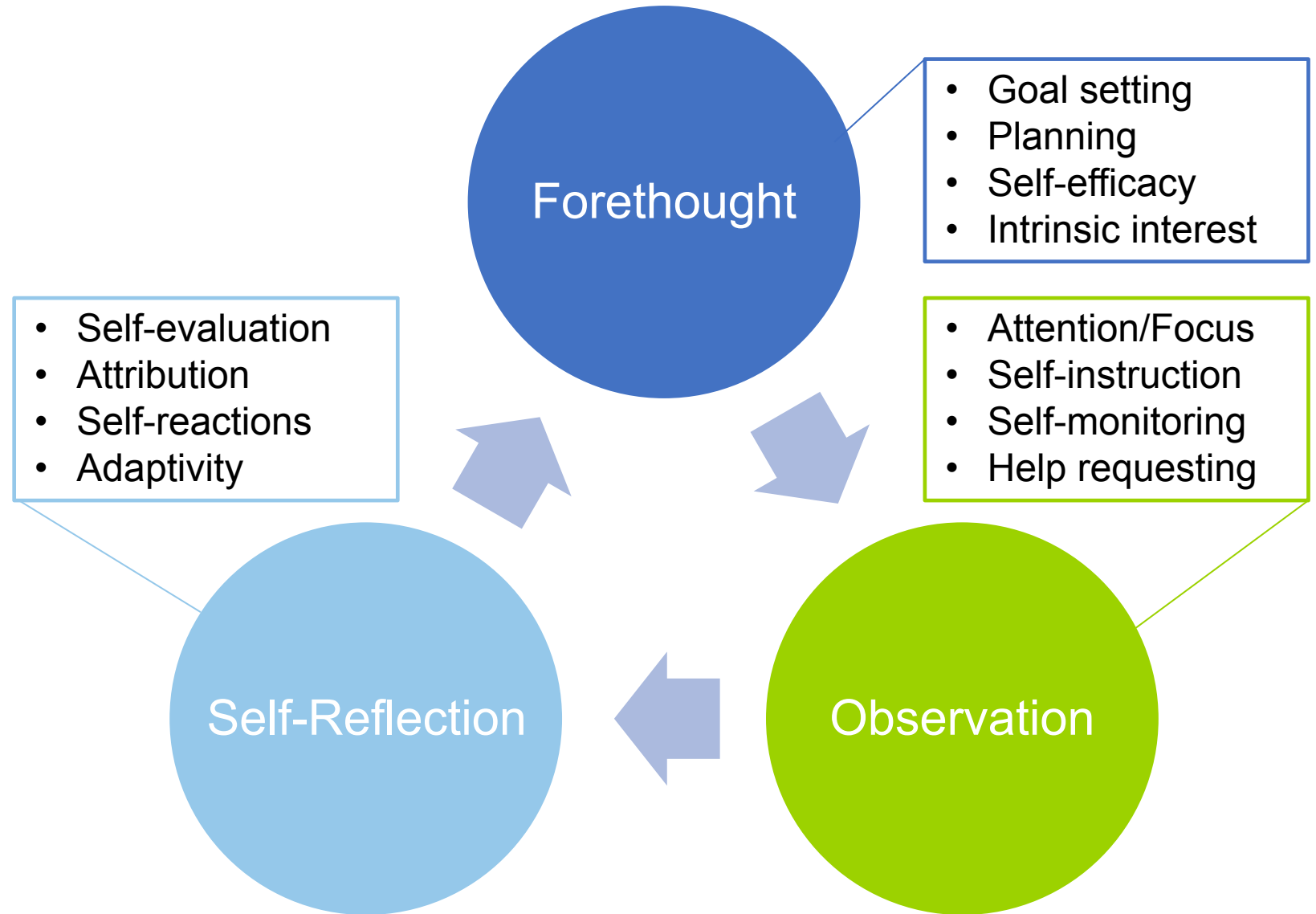


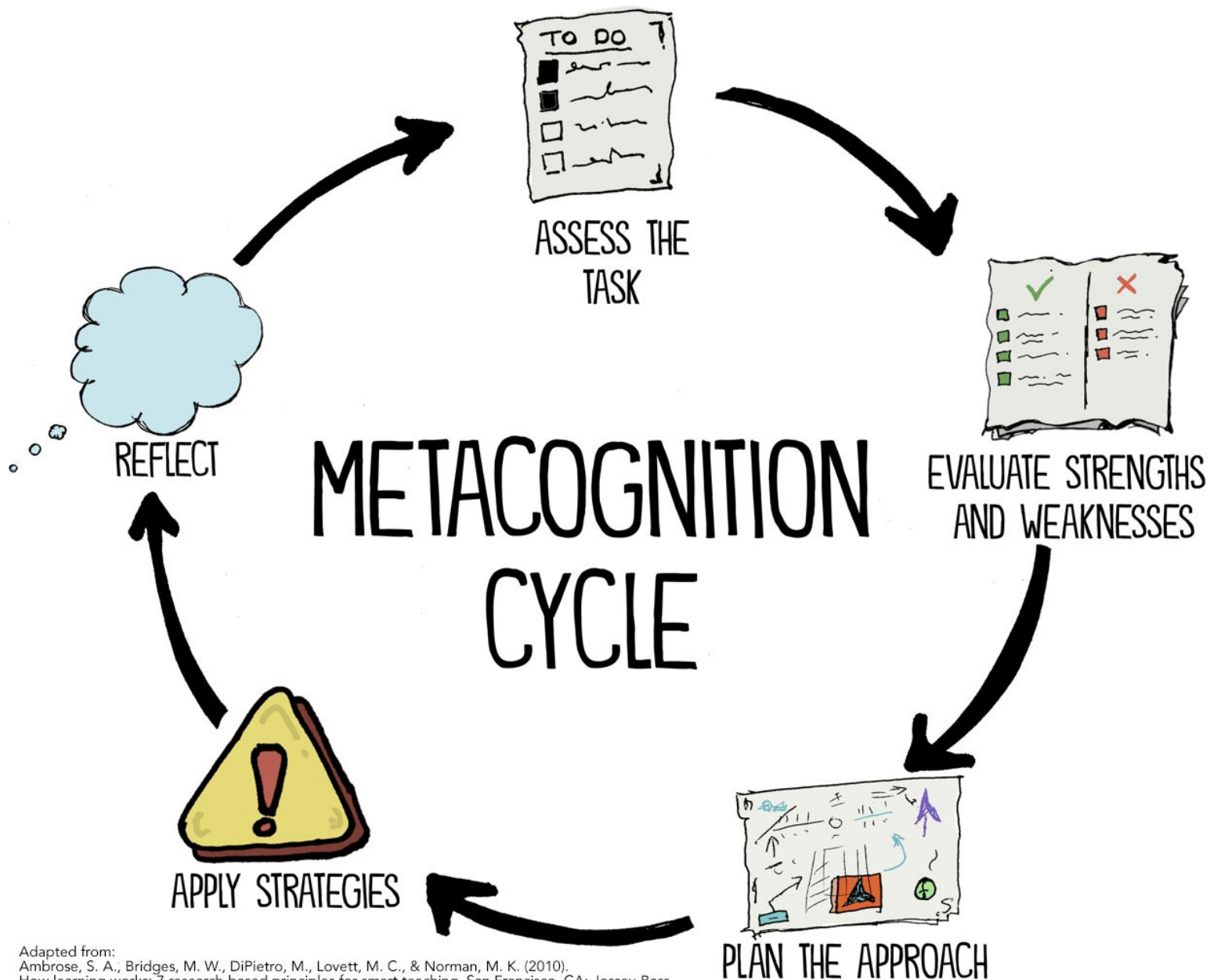
Learn from criticism and suggestions  
Act on teacher **feedback**



FEEDBACK

# SUCCESSFUL Transition to College





# METACOGNITION

“Thinking about Thinking”

# HIGH-IMPACT EXPERIENCES



**Undergraduate  
research**



**Student  
leadership**



**Study abroad**



**Job shadow,  
internship**



# IT STARTS WITH A **HANDSHAKE.**

- Career Development Platform
- Online career profile
- Upload resume
- Hundreds of jobs
- Experiential learning opportunities
- Career Events
- 3000+ employer contacts who can make their contact information available to you

# Your Ticket to Academic Success!



Center for  
UWF | Academic Success

## First Year Advising

- degree planning
- academic support
- academic goal setting

## Student Accessibility Resources

- classroom and learning accommodations
- housing accommodations
- assistive technology

## Tutoring and Learning Resources

- learning strategy workshops
- study skills development and academic coaching
- subject-based tutoring

## Testing Services

- accommodated testing
- proctored and make-up exams
- standardized testing

[uwf.edu/success](http://uwf.edu/success)